



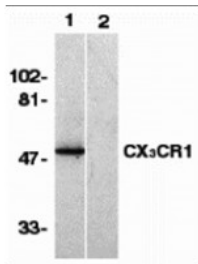
ProSci Incorporated
12170 Flint Place
Poway, CA 92064

Toll Free: +1 (888) 513 9525
Local: +1 (858) 513 2638
Fax: +1 (858) 513 2692

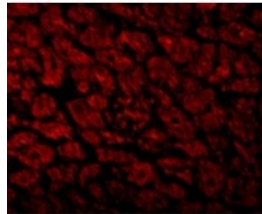
techsupport@prosci-inc.com
prosci-inc.com

CX3CR1 Antibody

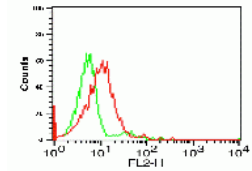
Cat. No.: 2093



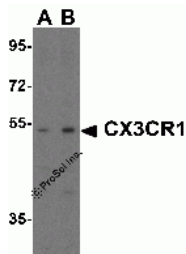
Western blot analysis of CX3CR1 in human spleen lysate with CX3CR1 antibody at 1 ug/mL in the absence (lane 1) or presence of blocking peptide (lane 2).



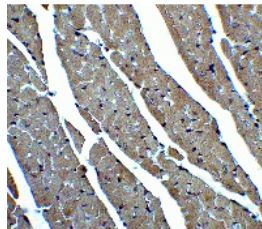
Immunofluorescence of CX3CR1 in Human Heart cells with CX3CR1 antibody at 10 ug/mL.



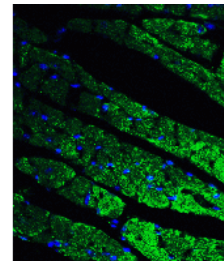
Flow cytometry analysis of THP-1 cells using CX3CR1 antibody at 0.1 ug/ml. Green: Isotype control. Red : CX3CR1 antibody.



Western blot analysis of CX3CR1 expression in rat spleen tissue lysate with CX3CR1 antibody at (A) 1 and (B) 2 ug/ml.

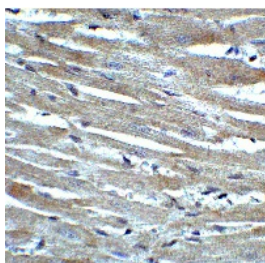


Immunohistochemistry of CX3CR1 in mouse heart tissue with CX3CR1 antibody at 2 ug/ml.

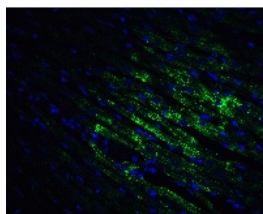


Immunofluorescence of CX3CR1 in mouse heart tissue with CX3CR1 antibody at 20 ug/ml.

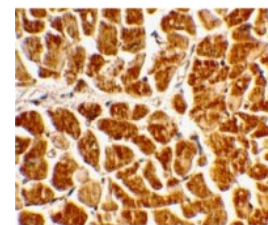
Green: CX3CR1 Antibody (2093)
Blue: DAPI staining



Immunohistochemistry of CX3CR1 in rat heart tissue with CX3CR1 antibody at 2 ug/ml.



Immunofluorescence of CX3CR1 in rat heart tissue with CX3CR1 antibody at 20 ug/ml.



Immunohistochemical staining of human heart tissue using CX3CR1 antibody at 2 ug/mL.

Green: CX3CR1 Antibody (2093)
Blue: DAPI staining

Ψ SPECIFICATIONS

HOST SPECIES:	Rabbit
SPECIES REACTIVITY:	Human, Mouse, Rat
HOMOLOGY:	Predicted species reactivity based on immunogen sequence: Bovine: (82%)
IMMUNOGEN:	CX3CR1 antibody was raised against a 20 amino acid peptide near the amino terminus of human CX3CR1. The immunogen is located within the first 50 amino acids of CX3CR1.
TESTED APPLICATIONS:	ELISA, Flow, IF, IHC-P, WB
APPLICATIONS:	CX3CR1 antibody can be used for detection of CX3CR1 by Western blot at 0.5 - 1 ug/mL. Antibody can also be used for immunohistochemistry starting at 2 ug/mL. For immunofluorescence start at 10 ug/mL. Flow cytometry at 0.1 ug/ml. Antibody validated: Western Blot in human and rat samples; Immunohistochemistry in human, mouse, and rat samples; Immunofluorescence in human, mouse, and rat samples and Flow Cytometry in human samples. All other applications and species not yet tested.
POSITIVE CONTROL:	1) Cat. No. 1306 - Human Spleen Tissue Lysate 2) Cat. No. 10-501 - Human Heart Tissue Slide 3) Cat. No. 1466 - Rat Spleen Tissue Lysate 4) Cat. No. 1405 - Mouse Kidney Tissue Lysate
PREDICTED MOLECULAR WEIGHT:	Predicted: 50 kDa Observed: 52 kDa

PURIFICATION:	CX3CR1 Antibody is affinity chromatography purified via peptide column.
CLONALITY:	Polyclonal
ISOTYPE:	IgG
CONJUGATE:	Unconjugated
PHYSICAL STATE:	Liquid
BUFFER:	CX3CR1 Antibody is supplied in PBS containing 0.02% sodium azide.
CONCENTRATION:	1 mg/mL
STORAGE CONDITIONS:	CX3CR1 antibody can be stored at 4°C for three months and -20°C, stable for up to one year. As with all antibodies care should be taken to avoid repeated freeze thaw cycles. Antibodies should not be exposed to prolonged high temperatures.

Ψ ADDITIONAL INFO

OFFICIAL SYMBOL:	CX3CR1
ALTERNATE NAMES:	CX3CR1 Antibody: V28, CCRL1, GPR13, CMKDR1, GPRV28, CMKBRL1, CX3C chemokine receptor 1, Beta chemokine receptor-like 1, C-X3-C CKR-1
ACCESSION NO.:	NP_001328
PROTEIN GI NO.:	4503171
GENE ID:	1524
USER NOTE:	Optimal dilutions for each application to be determined by the researcher.

Ψ BACKGROUND AND REFERENCES

BACKGROUND:	<p>CX3CR1 Antibody: CX3CR1 is one of the chemokine receptors that are required as coreceptors for HIV infection. The genes encoding human, murine, and rat CX3CR1 were cloned and designated V28 and CMKBRL1, CX3CR1, and RBS11, respectively. The encoded seven transmembrane protein was recently identified as the receptor for a novel transmembrane molecule, fractalkine, and renamed CX3CR1. Recently, CX3CR1 was found to serve as a coreceptor for HIV-1 and HIV-2 envelope fusion and virus infection, which can be inhibited by fractalkine. CX3CR1 mediates leukocyte migration and adhesion. CX3CR1 is expressed in a variety of human tissues and cell lines.</p>
REFERENCES:	<ol style="list-style-type: none">1) Raport CJ, Schweickart VL, Eddy RL JR, Shows TB, Gray PW. The orphan G-protein-coupled receptor-encoding gene V28 is closely related to genes for chemokine receptors and is expressed in lymphoid and neural tissues. <i>Gene</i> 1995;163:295-92) Combadiere C, Ahuja SK, Murphy PM. Cloning, chromosomal localization, and RNA expression of a human β chemokine receptor-like gene. <i>DNA Cell Biol</i> 1995;14:673-803) Combadiere C, Gao J, Tiffany HL, Murphy PM. Gene cloning, RNA distribution, and functional expression of mCX3CR1, a mouse chemotactic receptor for the CX3C chemokine fractalkine. <i>Biochem Biophys Res Commun</i> 1998;253:728-324) Harrison JK, Barber CM, Lynch KR. cDNA cloning of a G-protein-coupled receptor expressed in rat spinal cord and brain related to chemokine receptors. <i>Neurosci Lett</i> 1994;169:85-9

ANTIBODIES FOR RESEARCH USE ONLY.

For additional information, visit ProSci's [Terms & Conditions Page](#).

