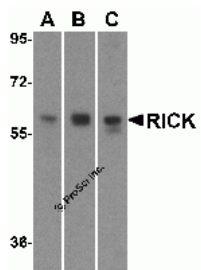
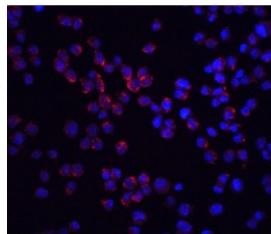


RICK Antibody

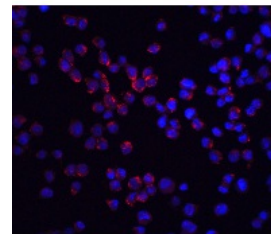
CATALOG NUMBER: 2075



Western blot analysis of RICK in (A) HeLa, (B) Ramos and (C) EL4 cell lysate with RICK antibody at 1 ug/mL.

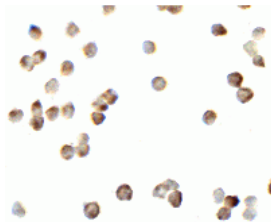


Immunofluorescence of RICK in K562 cells with RICK antibody at 20 ug/ml.

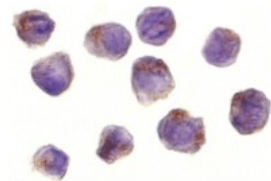


Immunofluorescence of RICK in K562 cells with RICK antibody at 20 ug/mL.

Red: RICK Antibody (2075)
Blue: DAPI staining



Immunocytochemistry of RICK in K562 cells with RICK antibody at 2.5 ug/mL.



Immunocytochemistry of RICK in A431 cells with RICK antibody at 10 ug/mL.

Specifications

SPECIES REACTIVITY: Human, Mouse, Rat

HOMOLOGY: Predicted species reactivity based on immunogen sequence: Bovine: (95%)

TESTED APPLICATIONS: ELISA, ICC, IF, WB

APPLICATIONS: RICK antibody can be used for detection of RICK by Western blot at 1 ug/mL. Antibody can also be used for immunocytochemistry starting at 10 ug/mL. For immunofluorescence start at 20 ug/mL.

Antibody validated: Western Blot in human and mouse samples; Immunocytochemistry in human samples and Immunofluorescence in human samples. All other applications and species not yet tested.

USER NOTE: Optimal dilutions for each application to be determined by the researcher.

POSITIVE CONTROL:

- 1) Cat. No. 1201 - HeLa Cell Lysate
- 2) Cat. No. 1225 - Ramos Cell Lysate
- 3) Cat. No. 1287 - EL4 Cell Lysate
- 4) Cat. No. 1202 - A431 Cell Lysate

PREDICTED MOLECULAR Predicted: 59 kDa

WEIGHT:	Observed: 59 kDa
IMMUNOGEN:	RICK antibody was raised against a peptide corresponding to 20 amino acids near the amino terminus of human RICK. The immunogen is located within the first 50 amino acids of RICK.
HOST SPECIES:	Rabbit

Properties

PURIFICATION:	RICK Antibody is affinity chromatography purified via peptide column.
PHYSICAL STATE:	Liquid
BUFFER:	RICK Antibody is supplied in PBS containing 0.02% sodium azide.
CONCENTRATION:	batch dependent
STORAGE CONDITIONS:	RICK antibody can be stored at 4°C for three months and -20°C, stable for up to one year. As with all antibodies care should be taken to avoid repeated freeze thaw cycles. Antibodies should not be exposed to prolonged high temperatures.
CLONALITY:	Polyclonal
ISOTYPE:	IgG
CONJUGATE:	Unconjugated

Additional Info

ALTERNATE NAMES:	RICK Antibody: CCK, RICK, RIP2, CARD3, GIG30, CARDIAK, UNQ277/PRO314/PRO34092, CARD-containing interleukin-1 beta-converting enzyme-associated kinase, CARD-containing IL-1 beta ICE-kinase
ACCESSION NO.:	O43353
PROTEIN GI NO.:	20455217
OFFICIAL SYMBOL:	RIPK2
GENE ID:	8767

Background

BACKGROUND: RICK Antibody: Apoptosis is mediated by death domain (DD) and/or caspase recruitment domain (CARD) containing molecules and a caspase family of proteases. DD-containing serine/threonine kinase RIP regulates Fas-induced apoptosis. A novel CARD-containing serine/threonine kinase was recently identified and designated RICK/RIP2/CARDIAK for RIP-like interacting CLARP kinase, receptor interacting protein-2, and CARD-containing ICE associated kinase, respectively. RICK contains an N-terminal kinase catalytic domain and a C-terminal CARD domain. Overexpression of RICK induced apoptosis and activation of NF- κ B and JNK. RICK interacts with members of the TRAF family, CLARP and caspase-1. Thus, RICK represents a novel kinase that regulates TNF and Fas induced-apoptosis and that is involved in the generation of proinflammatory cytokine IL-1 β . The messenger RNA of RICK is expressed in multiple human tissues.

REFERENCES:	1) Inohara N, del Peso L, Koseki T, et al. RICK, a novel protein kinase containing a caspase recruitment domain, interacts with CLARP and regulates CD95-mediated apoptosis. <i>J. Biol. Chem.</i> 1998; 273:12296-300. 2) McCarthy JV, Ni J, and Dixit VM. RIP2 is a novel NF- κ B-activating and cell death-inducing kinase. <i>J. Biol. Chem.</i> 1998; 273:16968-75. 3) Thome M, Hofmann K, Burns K, et al. Identification of CARDIAK, a RIP-like kinase that associates with caspase-1. <i>Curr. Biol.</i> 1998; 8:885-8.
--------------------	---

FOR RESEARCH USE ONLY

January 11, 2019