



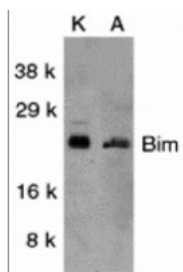
ProSci Incorporated
12170 Flint Place
Poway, CA 92064

Toll Free: +1 (888) 513 9525
Local: +1 (858) 513 2638
Fax: +1 (858) 513 2692

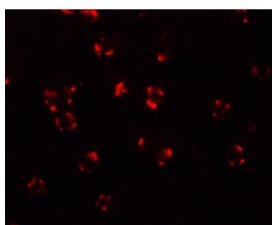
techsupport@prosci-inc.com
prosci-inc.com

Bim Antibody

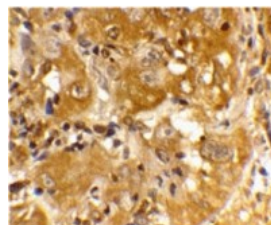
CATALOG NUMBER: 2065



Western blot analysis of Bim in K562 (K) and A549 (A) whole cell lysates with Bim antibody at 1 ug/mL.



Immunofluorescence of Bim in K562 cells with Bim Antibody at 20 ug/mL.



Immunohistochemistry of Bim in human skin cancer cells with Bim antibody at 20 ug/mL.

Specifications

SPECIES REACTIVITY:	Human, Mouse, Rat
TESTED APPLICATIONS:	ELISA, IF, IHC-P, WB
APPLICATIONS:	Bim antibody can be used for detection of Bim by Western blot at 1 ug/mL. A 23 kDa band can be detected. Antibody can also be used for immunohistochemistry starting at 20 ug/mL. For immunofluorescence start at 20 ug/mL. Antibody validated: Western Blot in human samples; Immunohistochemistry in human samples and Immunofluorescence in human samples. All other applications and species not yet tested.
USER NOTE:	Optimal dilutions for each application to be determined by the researcher.
POSITIVE CONTROL:	1) Cat. No. 1204 - K562 Cell Lysate
PREDICTED MOLECULAR WEIGHT:	23 kDa
IMMUNOGEN:	Bim antibody was raised against a 20 amino acid peptide corresponding to amino acids near the amino terminus of human Bim. The immunogen is located within the first 50 amino acids of Bim.
HOST SPECIES:	Rabbit

Properties

PURIFICATION:	Bim Antibody is affinity chromatography purified via peptide column.
PHYSICAL STATE:	Liquid
BUFFER:	Bim Antibody is supplied in PBS containing 0.02% sodium azide.
CONCENTRATION:	batch dependent
STORAGE CONDITIONS:	Bim antibody can be stored at 4°C for three months and -20°C, stable for up to one year. As with all antibodies care should be taken to avoid repeated freeze thaw cycles. Antibodies should not be exposed to prolonged high temperatures.

CLONALITY:	Polyclonal
ISOTYPE:	IgG
CONJUGATE:	Unconjugated

Additional Info

ALTERNATE NAMES:	Bim Antibody: BAM, BIM, BOD, Bcl-2-like protein 11, Bcl2-interacting mediator of cell death, Bcl2-L-11
ACCESSION NO.:	O43521
PROTEIN GI NO.:	18202042
OFFICIAL SYMBOL:	BCL2L11
GENE ID:	10018

Background

BACKGROUND: Bim Antibody: Members in the Bcl-2 family are critical regulators of apoptosis by either inhibiting or promoting cell death. Bcl-2 homology 3 (BH3) domain is a potent death domain. BH3 domain containing pro-apoptotic proteins, including Bad, Bax, Bid, Bik, and Hrk, form a growing subclass of the Bcl-2 family. A novel BH3 domain containing protein was recently identified and designated Bim or BOD in human, mouse and rat. Bim/BOD interacts with diverse members in the pro-survival Bcl-2 sub-family including Bcl-2, Bcl-xL and Bcl-w. Bim/BOD induces apoptosis. The messenger RNA of Bim is ubiquitously expressed in multiple tissues and cell lines.

REFERENCES: 1) O'Connor L, Strasser A, O'Reilly LA, et al. Bim: a novel member of the Bcl-2 family that promotes apoptosis. EMBO J. 1998; 17:384-395.

2) Hsu SY, Lin P, and Hsueh AJ BOD (Bcl-2-related ovarian death gene) is an ovarian BH3 domain-containing proapoptotic Bcl-2 protein capable of dimerization with diverse antiapoptotic Bcl-2 members. Mol. Endocrinol. 1998; 12:1432-40.

FOR RESEARCH USE ONLY

January 9, 2019