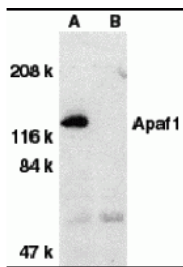




Apaf1 Peptide

Cat. No.: 2015P



Western blot analysis of Apaf1 in human heart tissue lysate with Apaf1 antibody at 1 ug/mL dilution in the absence (A) or presence (B) of blocking peptide (2015P).

Ψ SPECIFICATIONS

| | |
|-----------------------------|--------------------------------------------------------------------|
| LOCATION: | 20 amino acids near the carboxy terminus of human Apaf1. |
| SPECIES: | Human |
| TESTED APPLICATIONS: | Blocking |
| APPLICATIONS: | Apaf1 peptide is used for blocking the activity of Apaf1 antibody. |

| | |
|----------------------------|------------------------------------------------------------------------------------------------------------------------------------------------------------------------|
| ALTERNATE NAMES: | CED4, APAF-1, KIAA0413, Apoptotic protease-activating factor 1 |
| ACCESSION NO.: | AAC51678 |
| PROTEIN GI NO.: | 2330015 |
| PHYSICAL STATE: | Liquid |
| BUFFER: | PBS pH 7.2 (10 mM NaH ₂ PO ₄ , 10 mM Na ₂ HPO ₄ , 130 mM NaCl) containing 0.1% bovine serum albumin and 0.02% sodium azide |
| CONCENTRATION: | 200 ug/mL |
| STORAGE CONDITIONS: | Store Apaf1 peptide at -20°C, stable for one year. |

Ψ ADDITIONAL INFO

| | |
|-------------------------|----------------------------------------------------------------|
| ALTERNATE NAMES: | CED4, APAF-1, KIAA0413, Apoptotic protease-activating factor 1 |
| ACCESSION NO.: | AAC51678 |
| PROTEIN GI NO.: | 2330015 |
| OFFICIAL SYMBOL: | APAF1 |
| GENE ID: | 317 |

FOR RESEARCH USE ONLY.

For additional information, visit ProSci's [Terms & Conditions Page](#).

