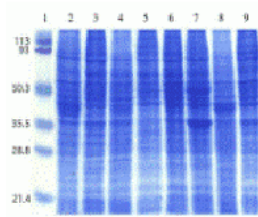




Human Cell Line II Blot

Cat. No.: 1502



Coomassie blue staining of human cell lysates in 12% SDS-PAGE. Lanes: 1, protein markers; 2, Daudi; 3, Raji; 4, K-562; 5, U-937; 6, THP-1; 7, HL-60; 8, Jurkat; and 9, MOLT-4.

Ψ SPECIFICATIONS

SPECIES:	Human
SAMPLES LOADED:	Lanes: 1, protein markers; 2, Daudi; 3, Raji; 4, K-562; 5, U-937; 6, THP-1; 7, HL-60; 8, Jurkat; and 9, MOLT-4.
TESTED APPLICATIONS:	WB
APPLICATIONS:	For Western Blot, the blot can be blocked with 1% BSA or 5% nonfat dry milk for 1 hour. Incubation takes 30 minutes to two hours with primary antibody, and 30 minutes to one hour with secondary antibody at room temperature.

Ψ PROPERTIES

GEL PERCENTAGE:	Gradient 4-20%
STORAGE CONDITIONS:	Store at 4°C. The blot can be reused after stripping.

FOR RESEARCH USE ONLY.

For additional information, visit ProSci's [Terms & Conditions Page](#).

