



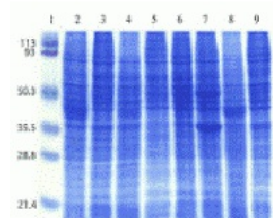
ProSci Incorporated
12170 Flint Place
Poway, CA 92064

Toll Free: +1 (888) 513 9525
Local: +1 (858) 513 2638
Fax: +1 (858) 513 2692

techsupport@prosci-inc.com
prosci-inc.com

Human Cell Line I Blot

CATALOG NUMBER: 1501



Coomassie blue staining of human cell lysates in 12% SDS-PAGE. Lanes: 1, protein markers; 2, MCF7; 3, HeLa; 4, HT-29; 5, 293; 6, Hep G2; 7, A-549; 8, SK-N-SH; and 9, PC-3.

Specifications

SPECIES:	Human
SAMPLES LOADED:	Lanes: 1, protein markers; 2, MCF7; 3, HeLa; 4, HT-29; 5, 293; 6, Hep G2; 7, A-549; 8, SK-N-SH; and 9, PC-3.
TESTED APPLICATIONS:	WB
APPLICATIONS:	For Western Blot, the blot can be blocked with 1% BSA or 5% nonfat dry milk for 1 hour. Incubation takes 30 minutes to two hours with primary antibody, and 30 minutes to one hour with secondary antibody at room temperature.

Properties

GEL PERCENTAGE:	Gradient 4-20%
STORAGE CONDITIONS:	Store at 4°C. The blot can be reused after stripping.

Product Description

Description not available.

FOR RESEARCH USE ONLY