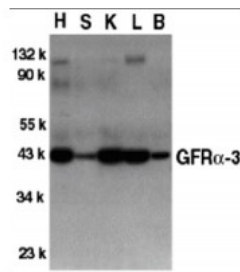
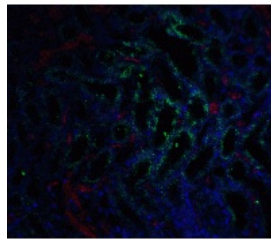


GFR alpha 3 Antibody

CATALOG NUMBER: 1137

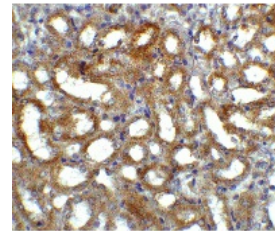


Western blot analysis of GFR alpha 3 in crude cell membrane fractions of mouse heart (H), spleen (S), kidney (K), liver (L), and brain (B), respectively, with GFR alpha 3 antibody at 1.2 ug/mL.

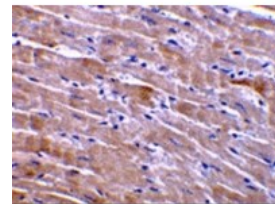


Immunofluorescence of GFR alpha 3 in mouse kidney tissue with GFR alpha 3 antibody at 5 ug/ml.

Green: GFR alpha 3 antibody (1137)
Red: Phalloidin staining
Blue: DAPI staining



Immunohistochemistry of GFR alpha 3 in mouse kidney tissue with GFR alpha 3 antibody at 5 ug/ml.



Immunohistochemistry of GFR alpha 3 in mouse heart tissue with GFR alpha 3 antibody at 10 ug/mL.

Specifications

SPECIES REACTIVITY: Human, Mouse, Rat

TESTED APPLICATIONS: ELISA, IF, IHC-P, WB

APPLICATIONS: GFR alpha 3 antibody can be used for detection of GFR alpha 3 expression by Western blot at 0.5 ug/mL. Antibody can also be used for immunohistochemistry starting at 5 ug/mL. For immunofluorescence start at 5 ug/mL.

Antibody validated: Western Blot in mouse samples; Immunohistochemistry in mouse samples and Immunofluorescence in mouse samples. All other applications and species not yet tested.

USER NOTE: Optimal dilutions for each application to be determined by the researcher.

POSITIVE CONTROL: 1) Cat. No. 1401 - Mouse Heart Tissue Lysate
2) Cat. No. 1404 - Mouse Liver Tissue Lysate

PREDICTED MOLECULAR WEIGHT: Predicted: 44 kDa

Observed: 43 kDa

IMMUNOGEN: GFR alpha 3 antibody was raised against a 14 amino acid peptide near the center of murine GFR alpha 3.

The immunogen is located within the last 50 amino acids of GFR alpha 3.

HOST SPECIES:	Rabbit
Properties	
PURIFICATION:	GFR alpha 3 Antibody is Antibody is DEAE purified.
PHYSICAL STATE:	Liquid
BUFFER:	GFR alpha 3 Antibody is supplied in PBS containing 0.02% sodium azide.
CONCENTRATION:	batch dependent
STORAGE CONDITIONS:	GFR alpha 3 antibody can be stored at 4°C for three months and -20°C, stable for up to one year. As with all antibodies care should be taken to avoid repeated freeze thaw cycles. Antibodies should not be exposed to prolonged high temperatures.
CLONALITY:	Polyclonal
ISOTYPE:	IgG
CONJUGATE:	Unconjugated

Additional Info

ALTERNATE NAMES:	GFR alpha 3 Antibody: Y15110, GFRalpha3, GDNF family receptor alpha-3, GDNF receptor alpha-3
ACCESSION NO.:	NP_034410
PROTEIN GI NO.:	160298126
OFFICIAL SYMBOL:	Gfra3
GENE ID:	14587

Background

BACKGROUND:	<p>GFR alpha 3 Antibody: Members of the glial cell line-derived neurotrophic factor (GDNF) family, including GDNF and neurturin (NTN) play essential roles in the control of vertebrate neuron survival and differentiation. A new member of the GDNF family was recently identified and designated persephin. Physiological responses to these neurotrophic factors require two receptor subunits, the novel glycosylphosphatidylinositol linked protein GFRα and Ret receptor tyrosine kinase GFRbeta. Following the findings of GFRα-1 and -2, a novel receptor in GFRα family was identified from human and mouse and designated GFRα-3. GFRα-3 binds persephin, thus, persephin, GFRα-3, and Ret PTK form a complex to transduce persephin signal and to mediate persephin function.</p>
REFERENCES:	<p>1) Milbrandt J, de Sauvage FJ, Fahrner TJ, et al. Persephin, a novel neurotrophic factor related to GDNF and neurturin. <i>Neuron</i> 1998; 20:245-253.</p> <p>2) Nomenclature Committee. Nomenclature of GPI-linked receptors for the GDNF ligand family. GFRα. <i>Neuron</i> 1997; 19:485.</p> <p>3) Jing S, Yu Y, Fang M, et al. GFRα-2 and GFRα-3 are two new receptors for ligands of the DGNF family. <i>J. Biol. Chem.</i> 1997; 272:33111-7.</p> <p>4) Baloh RH, Gorodinsky A, Golden JP, et al. GFRα3 is an orphan member of the GDNF/neurturin/persephin receptor family. <i>Proc. Natl. Acad. Sci. USA</i> 1998; 95:5801-6.</p>

FOR RESEARCH USE ONLY

January 9, 2019