



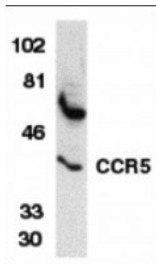
ProSci Incorporated
12170 Flint Place
Poway, CA 92064

Toll Free: +1 (888) 513 9525
Local: +1 (858) 513 2638
Fax: +1 (858) 513 2692

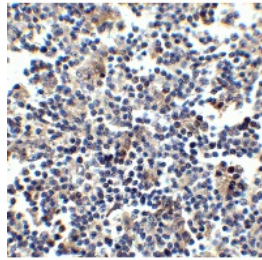
techsupport@prosci-inc.com
prosci-inc.com

CCR5 Antibody

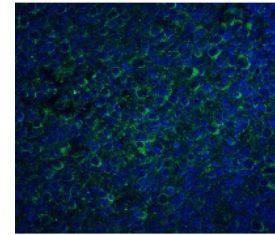
Cat. No.: 1112



Western blot analysis of CCR5 in THP-1 whole cell lysate with CCR5 antibody at 1 ug/mL.

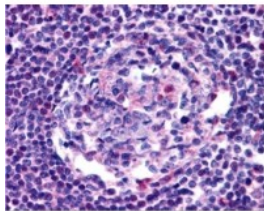


Immunohistochemistry of CCR5 in human lymph node tissue with CCR5 antibody at 2.5 ug/ml.



Immunofluorescence of CCR5 in human lymph node tissue with CCR5 antibody at 20 ug/mL.

Green: CCR5 Antibody (1112)
Blue: DAPI staining



Immunohistochemistry of CCR5 in human lymph node tissue with CCR5 antibody at 20 ug/mL.

Ψ SPECIFICATIONS

HOST SPECIES:	Rabbit
SPECIES REACTIVITY:	Human
IMMUNOGEN:	CCR5 antibody was raised against a 15 amino acid peptide near the amino terminus of human CCR5. The immunogen is located within the first 50 amino acids of CCR5.
TESTED APPLICATIONS:	ELISA, IF, IHC-P, WB
APPLICATIONS:	CCR5 antibody can be used for Western blot at 1 ug/mL. CCR5 antibody can also detect CCR5 by immunohistochemistry at 2.5 ug/mL. Antibody validated: Western Blot in human samples; Immunohistochemistry in human samples and Immunofluorescence in human samples. All other applications and species not yet tested.
POSITIVE CONTROL:	1) Cat. No. 1208 - THP-1 Cell Lysate 2) Cat. No. 1369 - Human Lymph node Tissue Lysate 3) Cat. No. 11-521 - Human Lymphoid Tissue Tissue Slide
PREDICTED MOLECULAR WEIGHT:	Predicted: 39 kDa Observed: 40 kDa

Ψ PROPERTIES

PURIFICATION:	CCR5 Antibody is affinity chromatography purified via peptide column.
CLONALITY:	Polyclonal
ISOTYPE:	IgG
CONJUGATE:	Unconjugated
PHYSICAL STATE:	Liquid
BUFFER:	CCR5 Antibody is supplied in PBS containing 0.02% sodium azide.
CONCENTRATION:	batch dependent
STORAGE CONDITIONS:	CCR5 antibody can be stored at 4°C for three months and -20°C, stable for up to one year. As with all antibodies care should be taken to avoid repeated freeze thaw cycles. Antibodies should not be exposed to prolonged high temperatures.

Ψ ADDITIONAL INFO

OFFICIAL SYMBOL:	CCR5
ALTERNATE NAMES:	CCR5 Antibody: CKR5, CCR-5, CD195, CKR-5, CCCR5, CMKBR5, IDDM22, CC-CKR-5, C-C chemokine receptor type 5, CHEMR13, C-C CKR-5
ACCESSION NO.:	AAB57793
PROTEIN GI NO.:	2104520
GENE ID:	1234
USER NOTE:	Optimal dilutions for each application to be determined by the researcher.

Ψ BACKGROUND AND REFERENCES

BACKGROUND:	<p>CCR5 Antibody: Human immunodeficiency virus (HIV) and related virus require coreceptors, in addition to CD4, to infect target cells. Some G protein-coupled receptors including CCR5, CXCR4, CCR3, CCR2b and CCR8 in the chemokine receptor family, and four new human molecules GPR15, STRL33, GPR1 and V28 were recently identified as HIV coreceptors. Among them, CCR5 (CC-CKR-5) is a principal coreceptor for macrophage- and dual-tropic HIV-1 strains fusion and entry of human white blood cells. CCR5 is required for the infection by HIV-1, HIV-2, and SIV. The beta-chemokines RANTES, MIP-alpha and MIP-beta are the ligands for CCR5 and prevent infection by M-tropic HIV-1. CXC5 associates with the surface CD4-gp120 of HIV complex and leads to membrane fusion and virus entry of target cells. The amino-terminal domain and the extracellular loops of CCR5 serve as HIV binding sites. CCR5 messenger RNA is expressed in lymphoid organs and monocytes.</p>
REFERENCES:	1) Dimitrov, DS. Cell 1997; 91:721-30
	2) Littman, DR. Cell 1998; 93:677-80
	3) Deng, H, et al. Nature 1996; 381:661-6
	4) Dragic, T, et al. Nature 1996; 381:667-73

ANTIBODIES FOR RESEARCH USE ONLY.

For additional information, visit ProSci's [Terms & Conditions Page](#).

