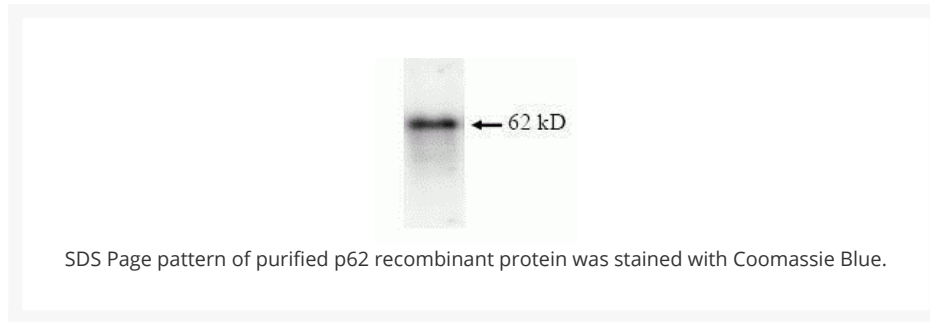




p62 Recombinant Protein

Cat. No.: 39-906



Ψ Specifications

SPECIES:	Human
SOURCE SPECIES:	E. coli
TESTED APPLICATIONS:	ELISA, WB
APPLICATIONS:	This recombinant protein can be used for WB, ELISA.

Ψ Properties

PURITY:	>90%
PHYSICAL STATE:	Liquid
BUFFER:	20mM Tris-HCl, 150mM NaCl, 1mM EDTA, 5mM Glutathione, 0.5mM GSSH and 10% Glycerol.
STORAGE CONDITIONS:	Store in working aliquots at -80 °C. Avoid freeze/thaw cycles.

Ψ Additional Info

OFFICIAL SYMBOL:	NUP62
-------------------------	-------

ALTERNATE NAMES:	nuclear pore glycoprotein p62, nucleoporin Nup62, 62 kDa nucleoporin, p62, IBSN, SNDI, Nuclear pore glycoprotein p62
ACCESSION NO.:	NP_001180286.1
PROTEIN GI NO.:	301069416
GENE ID:	23636

Background and References

BACKGROUND:	Protein p62 preferentially binds multiubiquitin chains and forms a novel cytoplasmic structure "sequestosome" which serves as a storage place for ubiquitinated proteins.
REFERENCES:	1) Eng M Tan (1999). A Novel Cytoplasmic Protein with RNA-binding Motifs is an Autoantigen in Human Hepatocellular Carcinoma. J Exp Med 189 (7): 1101-1110
	2) Moscat J (2005). The p62 scaffold regulates nerve growth factor -induced NF-kappa B activation by influencing TRAF6 polyubiquitination. J Biol Chem 280 (42) 35625-9

ANTIBODIES FOR RESEARCH USE ONLY.

For additional information, visit ProSci's [Terms & Conditions Page](#).