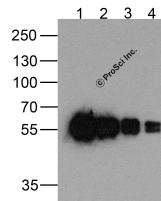


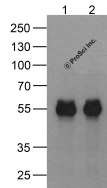


cMyc-tag Antibody [5G5H7]

Cat. No.: PM-7669



Western blot analysis of (1) 200ng, (2) 100 ng, (3) 50 ng, and (4) 25 ng of a cMyc-tag-containing recombinant GGP1 protein with cMyc-tag antibody at 0.5 µg/ml.



Western blot analysis of (1) 20 ng of cMyc-tagged recombinant GGP1 protein and (2) 20 ng of cMyc-tagged recombinant GGP1 protein using 1 µg of cMyc-tag antibody to immunoprecipitate and 1 µg/ml anti-GGP1 antibody to detect.

Ψ Specifications

HOST SPECIES:	Mouse
SPECIES REACTIVITY:	Tag
IMMUNOGEN:	cMyc-tag antibody was raised against a synthetic peptide containing EQKLISEEDL.
TESTED APPLICATIONS:	ELISA, IP, WB
APPLICATIONS:	cMyc-tag antibody can be used for detection of cMyc-tag epitope-containing recombinant proteins by Western blot at 0.5 - 1 µ/ml.
SPECIFICITY:	cMyc-tag antibody will detect amino- or carboxy-terminal Myc-tagged recombinant proteins.
POSITIVE CONTROL:	1) N/A

PREDICTED MOLECULAR WEIGHT:	N/A
------------------------------------	-----

Ψ Properties

PURIFICATION:	cMyc-tag antibody is Protein A chromatography purified.
CLONALITY:	Monoclonal
ISOTYPE:	IgG1
CONJUGATE:	Unconjugated
PHYSICAL STATE:	Liquid
BUFFER:	cMyc-tag antibody is supplied in PBS containing 0.02% sodium azide.
CONCENTRATION:	1 mg/mL
STORAGE CONDITIONS:	cMyc-tag antibody can be stored at 4 °C for three months and -20 °C, stable for up to one year.

Ψ Additional Info

OFFICIAL SYMBOL:	N/A
ALTERNATE NAMES:	cMyc-tag, cMyc
ACCESSION NO.:	N/A
PROTEIN GI NO.:	N/A
GENE ID:	N/A
USER NOTE:	Optimal dilutions for each application to be determined by the researcher.

Ψ Background and References

BACKGROUND:	Epitope tags provide a method to localize gene products in a variety of cell types, study the topology of proteins and protein complexes, identify associated proteins, and characterize newly identified, low abundance or poorly immunogenic proteins when protein specific antibodies are not available. cMyc-tag is one of the more popular epitope tags for expressed recombinant proteins.
--------------------	--

ANTIBODIES FOR RESEARCH USE ONLY.

For additional information, visit ProSci's [Terms & Conditions Page](#).