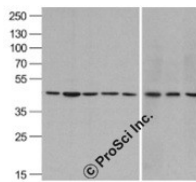


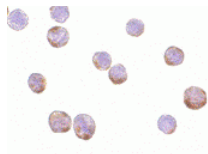


# beta-Actin Antibody

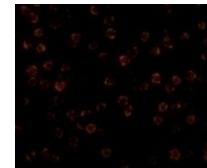
Cat. No.: 3779



Western blot analysis of beta-Actin in A431, Daudi, HepG2, HL60, Jurkat, Human brain, Mouse lung, and Chicken liver lysate with beta-Actin antibody at 1 µg/mL.



Immunocytochemistry of Actin in HeLa cells with Actin antibody at 1 µg/mL.



Immunofluorescence of beta-Actin in HeLa cells with beta-Actin antibody at 2 µg/mL.

## Ψ Specifications

<b>HOST SPECIES:</b>	Rabbit
<b>SPECIES REACTIVITY:</b>	Human, Mouse, Rat
<b>IMMUNOGEN:</b>	b-actin antibody was raised against a 16 amino acid synthetic peptide from near the amino-terminus of human b-actin.
<b>TESTED APPLICATIONS:</b>	ELISA, IF, IHC, WB
<b>APPLICATIONS:</b>	b-actin antibody can be used for the detection of b-actin by Western blot at 0.5 - 2 µg/mL. Antibody can also be used for immunohistochemistry starting at 1 µg/mL. For immunofluorescence start at 2 µg/mL.  Antibody validated: Western Blot in human and mouse samples; Immunocytochemistry in human samples and Immunofluorescence in human samples. All other applications and species not yet tested.

<b>POSITIVE CONTROL:</b>	1) Cat. No. 1201 - HeLa Cell Lysate
--------------------------	-------------------------------------

## Ψ Properties

<b>PURIFICATION:</b>	beta-Actin Antibody is affinity chromatography purified via peptide column.
<b>CLONALITY:</b>	Polyclonal
<b>ISOTYPE:</b>	IgG
<b>CONJUGATE:</b>	Unconjugated
<b>PHYSICAL STATE:</b>	Liquid
<b>BUFFER:</b>	beta-Actin Antibody is supplied in PBS containing 0.02% sodium azide.
<b>CONCENTRATION:</b>	1 mg/mL
<b>STORAGE CONDITIONS:</b>	beta-Actin antibody can be stored at 4 °C for three months and -20 °C, stable for up to one year. As with all antibodies care should be taken to avoid repeated freeze thaw cycles. Antibodies should not be exposed to prolonged high temperatures.

## Ψ Additional Info

<b>OFFICIAL SYMBOL:</b>	ACTB
<b>ALTERNATE NAMES:</b>	beta-Actin Antibody: Beta actin, b actin
<b>ACCESSION NO.:</b>	AAH02409
<b>PROTEIN GI NO.:</b>	12803203
<b>GENE ID:</b>	60
<b>USER NOTE:</b>	Optimal dilutions for each application to be determined by the researcher.

## Ψ Background and References

<b>BACKGROUND:</b>	beta-Actin Antibody: Actins are highly conserved proteins that are involved in cell motility, structure and integrity, processes that are crucial for tissue development and the development of organism. The actin cytoskeleton is one of the principal drivers of cell motility and is capable of responding to complex signaling cascades. Recent evidence suggests that it may play key roles in regulating apoptosis and aging. Beta actin is one of six different actin isoforms which have been identified. Like GAPDH, beta-Actin is constitutively expressed at high levels in almost all tissues and cell lines making it ideal for use as a loading control marker in immunoblots.
<b>REFERENCES:</b>	1) Lambrechts A, Van Troys, M and Ampe C. The actin cytoskeleton in normal and pathological cell motility. <i>Int. J. Biochem. Cell Biol.</i> 2004; 36:1890-909.
	2) Gourlay CW and Ayscough KR. The actin cytoskeleton: a key regulator of apoptosis and ageing. <i>Nat. Rev.</i> 2005; 6:583-9.

---

**ANTIBODIES FOR RESEARCH USE ONLY.**

For additional information, visit ProSci's [Terms & Conditions Page](#).