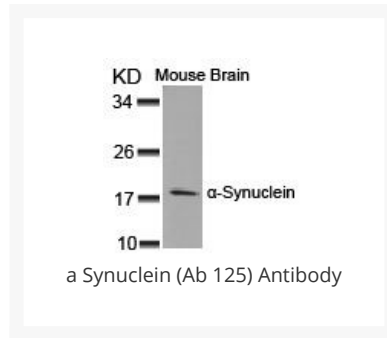




a Synuclein (Ab 125) Antibody

Cat. No.: 79-596



Ψ Specifications

| | |
|------------------------------------|--|
| HOST SPECIES: | Rabbit |
| SPECIES REACTIVITY: | Human |
| IMMUNOGEN: | a-Synuclein (Ab-125) antibody was raised against a peptide sequence around aa.123~127 (E-A-Y-E-M) derived from Human α-Synuclein. |
| TESTED APPLICATIONS: | WB |
| APPLICATIONS: | Western Blot: 1:500~1:1000 |
| SPECIFICITY: | This antibody detects endogenous level of total Synuclein protein. |
| PREDICTED MOLECULAR WEIGHT: | 18 kDa |

Ψ Properties

| | |
|------------------------|---|
| PURIFICATION: | Antibodies were purified by affinity-chromatography using epitope-specific peptide. |
| CLONALITY: | Polyclonal |
| CONJUGATE: | Unconjugated |
| PHYSICAL STATE: | Liquid |

| | |
|----------------------------|---|
| BUFFER: | Antibody supplied in phosphate buffered saline (without Mg ²⁺ and Ca ²⁺), pH 7.4, 150mM NaCl, 0.02% sodium azide and 50% glycerol. |
| CONCENTRATION: | 1 mg/mL |
| STORAGE CONDITIONS: | Store antibody at -20 °C for up to one year. |

Additional Info

| | |
|-------------------------|---|
| OFFICIAL SYMBOL: | SNCA |
| ALTERNATE NAMES: | PD1, NACP, PARK1, PARK4, CDKN6, SYN, SYUA, alpha-synuclein, |
| ACCESSION NO.: | NP_000336.1 |
| PROTEIN GI NO.: | 4507109 |
| GENE ID: | 6622 |

Background and References

| | |
|--------------------|---|
| BACKGROUND: | SncA is a member of the synuclein family of structurally related proteins that are prominently expressed in the central nervous system, which also includes beta- and gamma-synuclein. Synucleins are abundantly expressed in the brain and SncA and Snc-Beta inhibit phospholipase D2 selectively. SncA may serve to integrate presynaptic signaling and membrane trafficking. Aggregated SncA proteins form brain lesions that are hallmarks of neurodegenerative synucleinopathies. Defects in SncA play a role in the pathogenesis of Parkinson disease. SncA peptides are a major component of amyloid plaques in the brains of patients with Alzheimer disease. SncA shares 95% sequence homology with rat SncA. Rat SncA is specifically expressed in brain and is associated with synaptosomal membranes in neurons |
| REFERENCES: | 1) Takahashi T, et al. J Biol Chem 2003 Oct 24; 278 (43): 42225-33Ahn BH, et al. J Biol Chem 2002 Apr 05; 277 (14): 12334-42Negro A, et al. FASEB J 2002 Feb; 16 (2): 210-2Goldberg, et al. Nat. Cell Biol. 2000; 2, 115-119. |

ANTIBODIES FOR RESEARCH USE ONLY.

For additional information, visit ProSci's [Terms & Conditions Page](#).