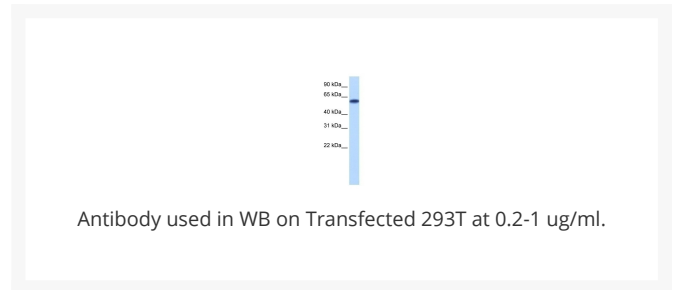
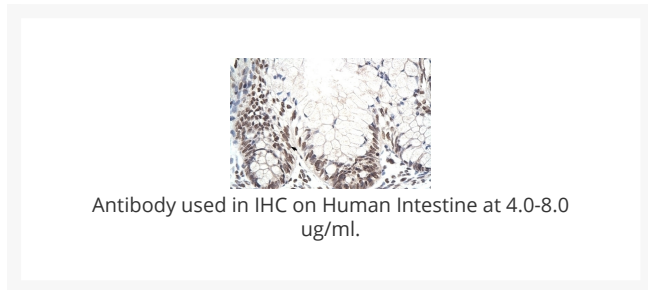




# ZNF394 Antibody

Cat. No.: 27-280



## Ψ Specifications

<b>HOST SPECIES:</b>	Rabbit
<b>SPECIES REACTIVITY:</b>	Human
<b>IMMUNOGEN:</b>	Antibody produced in rabbits immunized with a synthetic peptide corresponding a region of human ZNF394.
<b>TESTED APPLICATIONS:</b>	IHC, WB
<b>APPLICATIONS:</b>	ZNF394 antibody can be used for detection of ZNF394 by ELISA at 1:312500. ZNF394 antibody can be used for detection of ZNF394 by western blot at 0.25 µg/mL, and HRP conjugated secondary antibody should be diluted 1:50,000 - 100,000.
<b>POSITIVE CONTROL:</b>	1) Tranfected 293T Cell Lysate
<b>PREDICTED MOLECULAR WEIGHT:</b>	64 kDa

<b>PURIFICATION:</b>	Antibody is purified by peptide affinity chromatography method.
<b>CLONALITY:</b>	Polyclonal
<b>CONJUGATE:</b>	Unconjugated
<b>PHYSICAL STATE:</b>	Liquid
<b>BUFFER:</b>	Purified antibody supplied in 1x PBS buffer with 0.09% (w/v) sodium azide and 2% sucrose.
<b>CONCENTRATION:</b>	batch dependent
<b>STORAGE CONDITIONS:</b>	For short periods of storage (days) store at 4 °C. For longer periods of storage, store ZNF394 antibody at -20 °C. As with any antibody avoid repeat freeze-thaw cycles.

## Ψ Additional Info

<b>OFFICIAL SYMBOL:</b>	ZNF394
<b>ALTERNATE NAMES:</b>	ZNF394, ZSCAN46, ZKSCAN14
<b>ACCESSION NO.:</b>	NP_115540
<b>PROTEIN GI NO.:</b>	31982909
<b>GENE ID:</b>	84124
<b>USER NOTE:</b>	Optimal dilutions for each application to be determined by the researcher.

## Ψ Background and References

<b>BACKGROUND:</b>	ZNF394 belongs to the krueppel C2H2-type zinc-finger protein family and may be involved in transcriptional regulation.
<b>REFERENCES:</b>	1) Huang, C., (2004) Biochem. Biophys. Res. Commun. 320 (4), 1298-1305.

### ANTIBODIES FOR RESEARCH USE ONLY.

For additional information, visit ProSci's [Terms & Conditions Page](#).