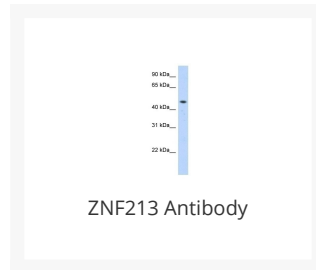




# ZNF213 Antibody

Cat. No.: 25-433



## Ψ Specifications

<b>HOST SPECIES:</b>	Rabbit
<b>SPECIES REACTIVITY:</b>	Human, Mouse, Rat
<b>IMMUNOGEN:</b>	Antibody produced in rabbits immunized with a synthetic peptide corresponding a region of human ZNF213.
<b>TESTED APPLICATIONS:</b>	ELISA, WB
<b>APPLICATIONS:</b>	ZNF213 antibody can be used for detection of ZNF213 by ELISA at 1:312500. ZNF213 antibody can be used for detection of ZNF213 by western blot at 1 µg/mL, and HRP conjugated secondary antibody should be diluted 1:50,000 - 100,000.
<b>POSITIVE CONTROL:</b>	1) Transfected 293T Cell Lysate
<b>PREDICTED MOLECULAR WEIGHT:</b>	51 kDa

## Ψ Properties

<b>PURIFICATION:</b>	Antibody is purified by peptide affinity chromatography method.
<b>CLONALITY:</b>	Polyclonal
<b>CONJUGATE:</b>	Unconjugated
<b>PHYSICAL STATE:</b>	Liquid

<b>BUFFER:</b>	Purified antibody supplied in 1x PBS buffer with 0.09% (w/v) sodium azide and 2% sucrose.
<b>CONCENTRATION:</b>	batch dependent
<b>STORAGE CONDITIONS:</b>	For short periods of storage (days) store at 4 °C. For longer periods of storage, store ZNF213 antibody at -20 °C. As with any antibody avoid repeat freeze-thaw cycles.

## Additional Info

<b>OFFICIAL SYMBOL:</b>	ZNF213
<b>ALTERNATE NAMES:</b>	ZNF213, CR53, ZKSCAN21, ZSCAN53
<b>ACCESSION NO.:</b>	NP_004211
<b>PROTEIN GI NO.:</b>	32698678
<b>GENE ID:</b>	7760
<b>USER NOTE:</b>	Optimal dilutions for each application to be determined by the researcher.

## Background and References

<b>BACKGROUND:</b>	ZNF213 may be involved in transcriptional regulation. C2H2 zinc finger proteins, such as ZNF213, have bipartite structures in which one domain binds DNA or RNA and the other modulates target gene expression.
<b>REFERENCES:</b>	1) Chen, X., (1999) Biochim. Biophys. Acta 1444 (2), 218-230.

### **ANTIBODIES FOR RESEARCH USE ONLY.**

For additional information, visit ProSci's [Terms & Conditions Page](#).