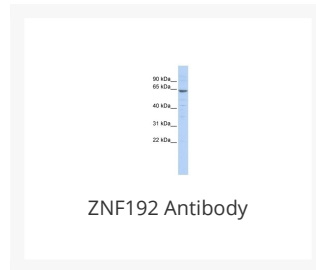




# ZNF192 Antibody

Cat. No.: 25-450



## Ψ Specifications

|                                    |   |
|------------------------------------|---|
| <b>HOST SPECIES:</b>               | Rabbit  |
| <b>SPECIES REACTIVITY:</b>         | Human   |
| <b>IMMUNOGEN:</b>                  | Antibody produced in rabbits immunized with a synthetic peptide corresponding a region of human ZNF192.   |
| <b>TESTED APPLICATIONS:</b>        | ELISA, WB   |
| <b>APPLICATIONS:</b>               | ZNF192 antibody can be used for detection of ZNF192 by ELISA at 1:312500. ZNF192 antibody can be used for detection of ZNF192 by western blot at 1 µg/mL, and HRP conjugated secondary antibody should be diluted 1:50,000 - 100,000. |
| <b>POSITIVE CONTROL:</b>           | 1) 721_B Cell Lysate  |
| <b>PREDICTED MOLECULAR WEIGHT:</b> | 66 kDa  |

## Ψ Properties

|                        |   |
|------------------------|---|
| <b>PURIFICATION:</b>   | Antibody is purified by peptide affinity chromatography method. |
| <b>CLONALITY:</b>      | Polyclonal  |
| <b>CONJUGATE:</b>      | Unconjugated  |
| <b>PHYSICAL STATE:</b> | Liquid  |

|                            |  |
|----------------------------|--|
| <b>BUFFER:</b>             | Purified antibody supplied in 1x PBS buffer with 0.09% (w/v) sodium azide and 2% sucrose.  |
| <b>CONCENTRATION:</b>      | batch dependent  |
| <b>STORAGE CONDITIONS:</b> | For short periods of storage (days) store at 4 °C. For longer periods of storage, store ZNF192 antibody at -20 °C. As with any antibody avoid repeat freeze-thaw cycles. |

## Additional Info

|                         |  |
|-------------------------|--|
| <b>OFFICIAL SYMBOL:</b> | ZKSCAN8  |
| <b>ALTERNATE NAMES:</b> | ZNF192, LD5-1, ZKSCAN8, ZNF192, ZSCAN40                                    |
| <b>ACCESSION NO.:</b>   | NP_006289  |
| <b>PROTEIN GI NO.:</b>  | 56699473   |
| <b>GENE ID:</b>         | 7745   |
| <b>USER NOTE:</b>       | Optimal dilutions for each application to be determined by the researcher. |

## Background and References

|                    |   |
|--------------------|---|
| <b>BACKGROUND:</b> | ZNF192 belongs to the krueppel C2H2-type zinc-finger protein family and contains the conserved SCAN box domain. ZNF192 may be involved in transcriptional regulation. |
| <b>REFERENCES:</b> | 1) Mungall, A.J., (2003) Nature 425 (6960), 805-811.  |

### **ANTIBODIES FOR RESEARCH USE ONLY.**

For additional information, visit ProSci's [Terms & Conditions Page](#).