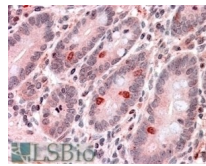




# TMPRSS2 Antibody

Cat. No.: 46-908



LSBio  
TMPRSS2 Antibody

## Ψ Specifications

<b>HOST SPECIES:</b>	Goat
<b>SPECIES REACTIVITY:</b>	Human
<b>IMMUNOGEN:</b>	The immunogen for this antibody is: C-TDWIYRQMRADG
<b>TESTED APPLICATIONS:</b>	ELISA, WB
<b>APPLICATIONS:</b>	<b>Peptide ELISA:</b> antibody detection limit dilution 1:8000. <b>Western Blot:</b> Approx 55kDa band observed in Human Pancreas lysates (calculated MW of 53.9kDa according to NP_005647.2). Recommended concentration: 0.1-0.3ug/ml.
<b>SPECIFICITY:</b>	#To_Delete#.
<b>POSITIVE CONTROL:</b>	1) Cat. No. 1307 - Human Pancreas Tissue Lysate

## Ψ Properties

<b>PURIFICATION:</b>	Purified from goat serum by ammonium sulphate precipitation followed by antigen affinity chromatography using the immunizing peptide.
<b>CLONALITY:</b>	Polyclonal
<b>CONJUGATE:</b>	Unconjugated
<b>PHYSICAL STATE:</b>	Liquid

<b>BUFFER:</b>	Supplied at 0.5 mg/ml in Tris saline, 0.02% sodium azide, pH7.3 with 0.5% bovine serum albumin. Aliquot and store at -20°C. Minimize freezing and thawing.
<b>CONCENTRATION:</b>	500 ug/mL
<b>STORAGE CONDITIONS:</b>	Aliquot and store at -20°C. Minimize freezing and thawing.

## Additional Info

<b>OFFICIAL SYMBOL:</b>	TMPRSS2
<b>ALTERNATE NAMES:</b>	transmembrane protease, serine 2, PRSS10, epitheliasin, TMPS2
<b>ACCESSION NO.:</b>	NP_005647.2
<b>PROTEIN GI NO.:</b>	14602459
<b>GENE ID:</b>	7113

## Background and References

<b>REFERENCES:</b>	1) Tomlins SA, Laxman B, Dhanasekaran SM, Helgeson BE, Cao X, Morris DS, Menon A, Jing X, Cao Q, Han B, Yu J, Wang L, Montie JE, Rubin MA, Pienta KJ, Roulston D, Shah RB, Varambally S, Mehra R, Chinnaiyan AM. Distinct classes of chromosomal rearrangements create oncogenic ETS gene fusions in prostate cancer. <i>Nature</i> . 2007 Aug 2;448(7153):595-9.
--------------------	---

### ANTIBODIES FOR RESEARCH USE ONLY.

For additional information, visit ProSci's [Terms & Conditions Page](#).