



TMPRSS2 Antibody, Monoclonal

Cat. No.: 24-034

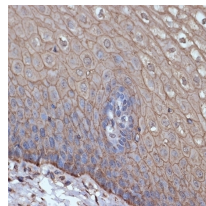
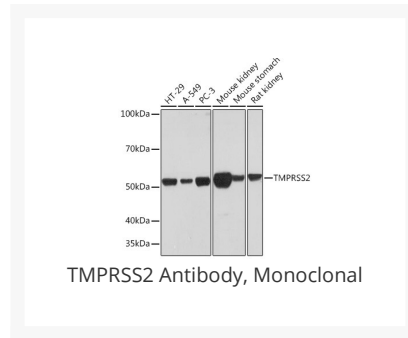


Figure 2 Immunohistochemistry Validation of TMPRSS2 in Human Esophageal Tissue

Immunohistochemistry of paraffin-embedded human esophageal tissue using TMPRSS2 antibody, 24-034, at 1:100 dilution (40x lens).

Ψ Specifications

HOST SPECIES:	Rabbit
SPECIES REACTIVITY:	Virus
IMMUNOGEN:	Synthetic Peptide
TESTED APPLICATIONS:	IHC, WB
APPLICATIONS:	WB: 1:500 - 1:2000, IHC: 1:50 - 1:200

Ψ Properties

PURIFICATION:	Affinity purification
CLONALITY:	Monoclonal
ISOTYPE:	IgG
CONJUGATE:	Unconjugated
PHYSICAL STATE:	Liquid
BUFFER:	PBS with 0.02% sodium azide, 50% glycerol, pH 7.3
STORAGE CONDITIONS:	Store at 4 °C short term. Aliquot and store at -20 °C long term. Avoid freeze-thaw cycles.

Additional Info

OFFICIAL SYMBOL:	TMPRSS2
ALTERNATE NAMES:	PP9284, PRSS10, transmembrane serine protease 2
ACCESSION NO.:	O15393
GENE ID:	7113
USER NOTE:	Optimal dilutions for each application to be determined by the researcher.

Background and References

BACKGROUND:	<p>This gene encodes a protein that belongs to the serine protease family. The encoded protein contains a type II transmembrane domain, a receptor class A domain, a scavenger receptor cysteine-rich domain and a protease domain. Serine proteases are known to be involved in many physiological and pathological processes. This gene was demonstrated to be up-regulated by androgenic hormones in prostate cancer cells and down-regulated in androgen-independent prostate cancer tissue. The protease domain of this protein is thought to be cleaved and secreted into cell media after autocleavage. Alternatively spliced transcript variants encoding different isoforms have been found for this gene. [provided by RefSeq, Sep 2008]</p>
--------------------	--

ANTIBODIES FOR RESEARCH USE ONLY.

For additional information, visit ProSci's [Terms & Conditions Page](#).