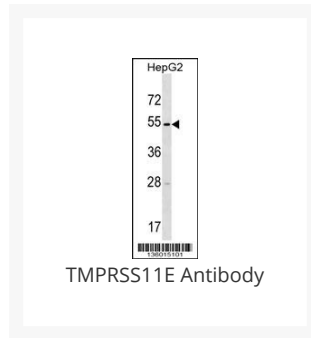




# TMPRSS11E Antibody

Cat. No.: 58-543



## Ψ Specifications

<b>HOST SPECIES:</b>	Rabbit
<b>SPECIES REACTIVITY:</b>	Human
<b>IMMUNOGEN:</b>	This TMPRSS11E antibody is generated from rabbits immunized with a KLH conjugated synthetic peptide between 249-277 amino acids from the Central region of human TMPRSS11E.
<b>TESTED APPLICATIONS:</b>	WB
<b>APPLICATIONS:</b>	For WB starting dilution is: 1:1000
<b>PREDICTED MOLECULAR WEIGHT:</b>	48 kDa

## Ψ Properties

<b>PURIFICATION:</b>	This antibody is purified through a protein A column, followed by peptide affinity purification.
<b>CLONALITY:</b>	Polyclonal
<b>ISOTYPE:</b>	Rabbit Ig
<b>CONJUGATE:</b>	Unconjugated

<b>PHYSICAL STATE:</b>	Liquid
<b>BUFFER:</b>	Supplied in PBS with 0.09% (W/V) sodium azide.
<b>CONCENTRATION:</b>	batch dependent
<b>STORAGE CONDITIONS:</b>	Store at 4 °C for three months and -20 °C, stable for up to one year. As with all antibodies care should be taken to avoid repeated freeze thaw cycles. Antibodies should not be exposed to prolonged high temperatures.

## Additional Info

<b>OFFICIAL SYMBOL:</b>	TMPRSS11E
<b>ALTERNATE NAMES:</b>	Transmembrane protease serine 11E, 3421-, Serine protease DESC1, Transmembrane protease serine 11E2, Transmembrane protease serine 11E non-catalytic chain, Transmembrane protease serine 11E catalytic chain, TMPRSS11E, DESC1, TMPRSS11E2
<b>ACCESSION NO.:</b>	Q9UL52
<b>PROTEIN GI NO.:</b>	57015324
<b>GENE ID:</b>	28983
<b>USER NOTE:</b>	Optimal dilutions for each application to be determined by the researcher.

## Background and References

<b>BACKGROUND:</b>	TMPRSS11E is serine protease which possesses both gelatinolytic and caseinolytic activities. Shows a preference for Arg in the P1 position (By similarity).
<b>REFERENCES:</b>	1) Kyrieleis, O.J., et al. FEBS J. 274(8):2148-2160(2007)
	2) Hillier, L.W., et al. Nature 434(7034):724-731(2005)
	3) Hobson, J.P., et al. J. Biol. Chem. 279(45):46981-46994(2004)
	4) Clark, H.F., et al. Genome Res. 13(10):2265-2270(2003)

### **ANTIBODIES FOR RESEARCH USE ONLY.**

For additional information, visit ProSci's [Terms & Conditions Page](#).