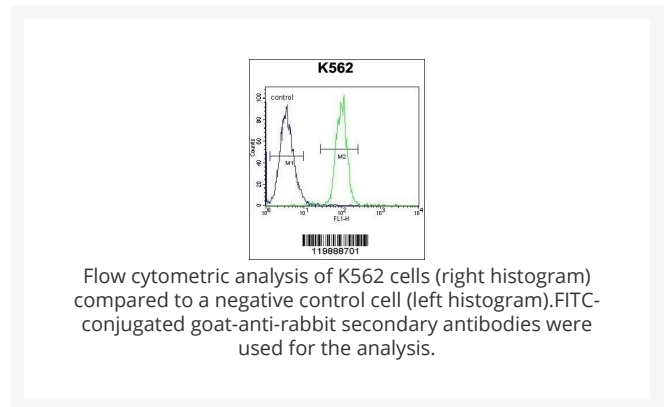
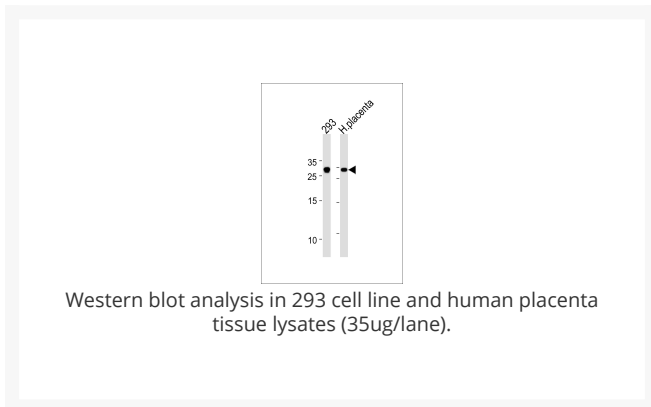
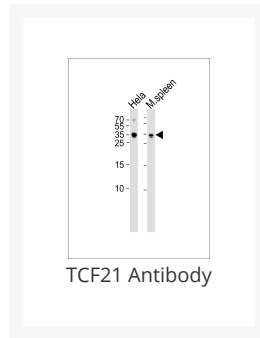




# TCF21 Antibody

Cat. No.: 55-924



## Ψ Specifications

<b>HOST SPECIES:</b>	Rabbit
<b>SPECIES REACTIVITY:</b>	Human
<b>HOMOLOGY:</b>	Predicted species reactivity based on immunogen sequence: Bovine
<b>IMMUNOGEN:</b>	This TCF21 antibody is generated from rabbits immunized with a KLH conjugated synthetic peptide between 144-173 amino acids from the C-terminal region of human TCF21.
<b>TESTED APPLICATIONS:</b>	Flow

<b>APPLICATIONS:</b>	For WB starting dilution is: 1:1000 For FACS starting dilution is: 1:10-50
<b>PREDICTED MOLECULAR WEIGHT:</b>	20 kDa

## Ψ Properties

<b>PURIFICATION:</b>	This antibody is purified through a protein A column, followed by peptide affinity purification.
<b>CLONALITY:</b>	Polyclonal
<b>ISOTYPE:</b>	Rabbit Ig
<b>CONJUGATE:</b>	Unconjugated
<b>PHYSICAL STATE:</b>	Liquid
<b>BUFFER:</b>	Supplied in PBS with 0.09% (W/V) sodium azide.
<b>CONCENTRATION:</b>	batch dependent
<b>STORAGE CONDITIONS:</b>	Store at 4 °C for three months and -20 °C, stable for up to one year. As with all antibodies care should be taken to avoid repeated freeze thaw cycles. Antibodies should not be exposed to prolonged high temperatures.

## Ψ Additional Info

<b>OFFICIAL SYMBOL:</b>	TCF21
<b>ALTERNATE NAMES:</b>	Transcription factor 21, TCF-21, Capsulin, Class A basic helix-loop-helix protein 23, bHLHa23, Epicardin, Podocyte-expressed 1, Pod-1, TCF21, BHLHA23, POD1
<b>ACCESSION NO.:</b>	O43680
<b>GENE ID:</b>	6943
<b>USER NOTE:</b>	Optimal dilutions for each application to be determined by the researcher.

## Ψ Background and References

<b>BACKGROUND:</b>	TCF21 encodes a transcription factor of the basic helix-loop-helix family. The TCF21 product is mesoderm specific, and expressed in embryonic epicardium, mesenchyme-derived tissues of lung, gut, gonad, and both mesenchymal and glomerular epithelial cells in the kidney. Two transcript variants encoding the same protein have been found for this gene.
<b>REFERENCES:</b>	1) Jugessur, A., et al. PLoS ONE(7), E11493 (2010) : 2) Vieira, A.R., et al. Genet. Med. 10(9):668-674(2008)

	3) Melzer, D., et al. PLoS Genet.(5), E1000072 (2008) :
	4) Smith, L.T., et al. Proc. Natl. Acad. Sci. U.S.A. 103(4):982-987(2006)

---

**ANTIBODIES FOR RESEARCH USE ONLY.**

For additional information, visit ProSci's [Terms & Conditions Page](#).