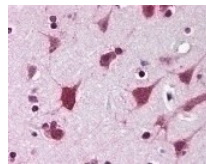




TARBP2 Antibody

Cat. No.: 49-320



TARBP2 Antibody

Ψ Specifications

HOST SPECIES:	Rabbit
SPECIES REACTIVITY:	Bovine, Chimpanzee, Human, Mouse, Rat, Zebrafish
IMMUNOGEN:	A portion of amino acids 150-200 of human TRBP2.
TESTED APPLICATIONS:	IHC, WB
APPLICATIONS:	TARBP2 antibody can be used in ELISA, Western Blot, immunohistochemistry starting at 5 µg/mL, and immunofluorescence starting at 10 µg/mL.
SPECIFICITY:	The amino acid sequence used as immunogen is 100% homologous in human (isoforms a and b), mouse, rat, bovine, chimp, and zebrafish. Human isoform a is a 366 amino acid protein, and human isoform b is a 345 amino acid protein.

Ψ Properties

PURIFICATION:	Immunoaffinity Chromatography
CLONALITY:	Polyclonal
CONJUGATE:	Unconjugated
PHYSICAL STATE:	Liquid
BUFFER:	PBS, 0.2% gelatin, 0.05% sodium azide.
CONCENTRATION:	0.5 mg/ml

STORAGE CONDITIONS:	Short term: 4 °C. Long term: Store at -20 °C. Avoid freeze-thaw cycles.
----------------------------	---

Additional Info

OFFICIAL SYMBOL:	TARBP2
ALTERNATE NAMES:	TARBP2, TAR RNA binding protein 2, TRBP1, TRBP2, TAR RNA-binding protein 2, TRBP, LOQS
ACCESSION NO.:	Q15633
PROTEIN GI NO.:	209572714
GENE ID:	6895
USER NOTE:	Optimal dilutions for each application to be determined by the researcher.

Background and References

BACKGROUND:	TARBP2 Antibody
--------------------	-----------------

ANTIBODIES FOR RESEARCH USE ONLY.

For additional information, visit ProSci's [Terms & Conditions Page](#).