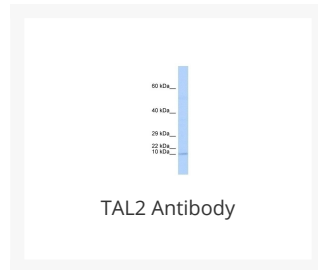




TAL2 Antibody

Cat. No.: 25-442



Ψ Specifications

HOST SPECIES:	Rabbit
SPECIES REACTIVITY:	Human
IMMUNOGEN:	Antibody produced in rabbits immunized with a synthetic peptide corresponding a region of human TAL2.
TESTED APPLICATIONS:	ELISA, WB
APPLICATIONS:	TAL2 antibody can be used for detection of TAL2 by ELISA at 1:1562500. TAL2 antibody can be used for detection of TAL2 by western blot at 1 µg/mL, and HRP conjugated secondary antibody should be diluted 1:50,000 - 100,000.
POSITIVE CONTROL:	1) Cat. No. XBL-10123 - Fetal Brain Tissue Lysate
PREDICTED MOLECULAR WEIGHT:	12 kDa

Ψ Properties

PURIFICATION:	Antibody is purified by peptide affinity chromatography method.
CLONALITY:	Polyclonal
CONJUGATE:	Unconjugated
PHYSICAL STATE:	Liquid

BUFFER:	Purified antibody supplied in 1x PBS buffer with 0.09% (w/v) sodium azide and 2% sucrose.
CONCENTRATION:	batch dependent
STORAGE CONDITIONS:	For short periods of storage (days) store at 4 °C. For longer periods of storage, store TAL2 antibody at -20 °C. As with any antibody avoid repeat freeze-thaw cycles.

Additional Info

OFFICIAL SYMBOL:	TAL2
ALTERNATE NAMES:	TAL2, BHLHA19
ACCESSION NO.:	NP_005412
PROTEIN GI NO.:	4885619
GENE ID:	6887
USER NOTE:	Optimal dilutions for each application to be determined by the researcher.

Background and References

BACKGROUND:	TAL2 is a helix-loop-helix protein. Translocations between this gene on chromosome 9 and the T-cell receptor beta-chain locus on chromosome 7 have been associated with activation of the T-cell acute lymphocytic leukemia 2 gene and T-cell acute lymphoblastic leukemia.
REFERENCES:	1) Humphray, S.J., (2004) Nature 429 (6990), 369-374.

ANTIBODIES FOR RESEARCH USE ONLY.

For additional information, visit ProSci's [Terms & Conditions Page](#).