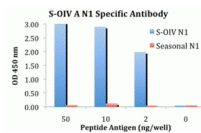




Swine H1N1 Neuraminidase Peptide

Cat. No.: 5249P



ELISA results using Swine H1N1 Neuraminidase antibody at 1 $\mu\text{g}/\text{mL}$ and the blocking and corresponding peptides at 50, 10, 2 and 0 ng/mL .

Ψ Specifications

SPECIES:	Influenza A virus (H1N1)
TESTED APPLICATIONS:	Blocking
APPLICATIONS:	Swine H1N1 Neuraminidase peptide is meant to be used as a positive control in ELISA applications to detect Swine-Origin Influenza A antibody.

Ψ Properties

PHYSICAL STATE:	Liquid
BUFFER:	PBS pH 7.2 (10 mM NaH_2PO_4 , 10 mM Na_2HPO_4 , 130 mM NaCl) containing 0.1% bovine serum albumin and 0.02% sodium azide
CONCENTRATION:	200 $\mu\text{g}/\text{mL}$
STORAGE CONDITIONS:	Store Swine H1N1 Neuraminidase peptide at -20°C , stable for one year.

Ψ Additional Info

OFFICIAL SYMBOL:	NA
ACCESSION NO.:	ACQ76308

PROTEIN GI NO.:	229535824
------------------------	-----------

Background and References

REFERENCES:	1) A/California/14/2009 (H1N1)
--------------------	--------------------------------

ANTIBODIES FOR RESEARCH USE ONLY.

For additional information, visit ProSci's [Terms & Conditions Page](#).