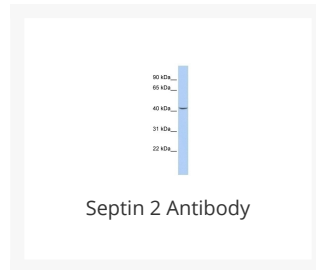




Septin 2 Antibody

Cat. No.: 27-094



Ψ Specifications

| | |
|------------------------------------|---|
| HOST SPECIES: | Rabbit |
| SPECIES REACTIVITY: | Human, Mouse, Rat |
| IMMUNOGEN: | Antibody produced in rabbits immunized with a synthetic peptide corresponding a region of human Septin 2. |
| TESTED APPLICATIONS: | ELISA, WB |
| APPLICATIONS: | Septin 2 antibody can be used for detection of Septin 2 by ELISA at 1:312500. Septin 2 antibody can be used for detection of Septin 2 by western blot at 1 µg/mL, and HRP conjugated secondary antibody should be diluted 1:50,000 - 100,000. |
| POSITIVE CONTROL: | 1) Cat. No. 1211 - HepG2 Cell Lysate |
| PREDICTED MOLECULAR WEIGHT: | 41 kDa |

Ψ Properties

| | |
|------------------------|---|
| PURIFICATION: | Antibody is purified by peptide affinity chromatography method. |
| CLONALITY: | Polyclonal |
| CONJUGATE: | Unconjugated |
| PHYSICAL STATE: | Liquid |

| | |
|----------------------------|--|
| BUFFER: | Purified antibody supplied in 1x PBS buffer with 0.09% (w/v) sodium azide and 2% sucrose. |
| CONCENTRATION: | batch dependent |
| STORAGE CONDITIONS: | For short periods of storage (days) store at 4 °C. For longer periods of storage, store Septin 2 antibody at -20 °C. As with any antibody avoid repeat freeze-thaw cycles. |

Additional Info

| | |
|-------------------------|--|
| OFFICIAL SYMBOL: | SEPT2 |
| ALTERNATE NAMES: | SEPT2, DIFF6, KIAA0158, NEDD5, Pnutl3, hNedd5, NEDD-5 |
| ACCESSION NO.: | NP_006146 |
| PROTEIN GI NO.: | 56549640 |
| GENE ID: | 4735 |
| USER NOTE: | Optimal dilutions for each application to be determined by the researcher. |

Background and References

| | |
|--------------------|--|
| BACKGROUND: | SEPT2 is required for normal progress through mitosis. SEPT2 is involved in cytokinesis. |
| REFERENCES: | 1) Spiliotis, E.T., (2008) J. Cell Biol. 180 (2), 295-303. |

ANTIBODIES FOR RESEARCH USE ONLY.

For additional information, visit ProSci's [Terms & Conditions Page](#).