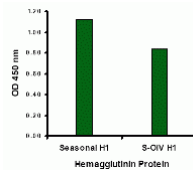




Seasonal H1N1 Hemagglutinin Peptide

Cat. No.: 5239P



Seasonal Influenza A Hemagglutinin antibody (2 µg/mL) recognizes seasonal influenza A (H1N1), and to a lesser extent swine-origin influenza A (S-OIV, H1N1), Hemagglutinin protein in ELISA.

Ψ Specifications

SPECIES:	Influenza A virus (H1N1)
TESTED APPLICATIONS:	Blocking
APPLICATIONS:	Seasonal H1N1 Hemagglutinin peptide is meant to be used as a positive control in ELISA applications to detect Seasonal Influenza A antibody.

Ψ Properties

PHYSICAL STATE:	Liquid
BUFFER:	PBS pH 7.2 (10 mM NaH ₂ PO ₄ , 10 mM Na ₂ HPO ₄ , 130 mM NaCl) containing 0.1% bovine serum albumin and 0.02% sodium azide
CONCENTRATION:	200 µg/mL
STORAGE CONDITIONS:	Store Seasonal H1N1 Hemagglutinin peptide at -20 °C, stable for one year.

Ψ Additional Info

OFFICIAL SYMBOL:	HA
ACCESSION NO.:	ACA28844

PROTEIN GI NO.:	168805691
------------------------	-----------

Background and References

REFERENCES:	1) A/Brisbane/59/2007 (H1N1)
--------------------	------------------------------

ANTIBODIES FOR RESEARCH USE ONLY.

For additional information, visit ProSci's [Terms & Conditions Page](#).