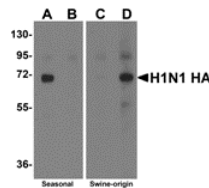




# Seasonal H1N1 Hemagglutinin Peptide

Cat. No.: 5231P



Western blot analysis of Hemagglutinin using recombinant seasonal Hemagglutinin (lanes A & B) and swine-origin Hemagglutinin (lanes C & D) with anti-seasonal Hemagglutinin antibody (5231) at 2 µg/mL (lanes A & C) and anti-swine-origin Hemagglutinin antibody (5232) at 2 µg/mL (lanes B & D).

## Ψ Specifications

<b>SPECIES:</b>	Influenza A virus (H1N1)
<b>TESTED APPLICATIONS:</b>	Blocking
<b>APPLICATIONS:</b>	Seasonal H1N1 Hemagglutinin peptide is meant to be used as a positive control in ELISA applications to detect Seasonal Influenza A antibody.

## Ψ Properties

<b>PHYSICAL STATE:</b>	Liquid
<b>BUFFER:</b>	PBS pH 7.2 (10 mM NaH <sub>2</sub> PO <sub>4</sub> , 10 mM Na <sub>2</sub> HPO <sub>4</sub> , 130 mM NaCl) containing 0.1% bovine serum albumin and 0.02% sodium azide
<b>CONCENTRATION:</b>	200 µg/mL
<b>STORAGE CONDITIONS:</b>	Store Seasonal H1N1 Hemagglutinin peptide at -20 °C, stable for one year.

## Ψ Additional Info

<b>OFFICIAL SYMBOL:</b>	HA
-------------------------	----

<b>ACCESSION NO.:</b>	ACA28844
<b>PROTEIN GI NO.:</b>	168805691

## Background and References

---

<b>REFERENCES:</b>	1) A/Brisbane/59/2007 (H1N1)
--------------------	------------------------------

---

### **ANTIBODIES FOR RESEARCH USE ONLY.**

For additional information, visit ProSci's [Terms & Conditions Page](#).