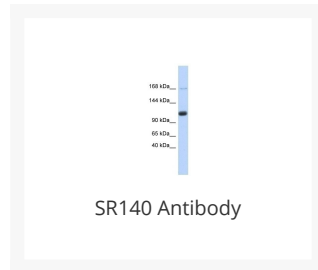




SR140 Antibody

Cat. No.: 25-679



Ψ Specifications

HOST SPECIES:	Rabbit
SPECIES REACTIVITY:	Human, Mouse, Rat
IMMUNOGEN:	Antibody produced in rabbits immunized with a synthetic peptide corresponding a region of human SR140.
TESTED APPLICATIONS:	ELISA, WB
APPLICATIONS:	SR140 antibody can be used for detection of SR140 by ELISA at 1:62500. SR140 antibody can be used for detection of SR140 by western blot at 1 µg/mL, and HRP conjugated secondary antibody should be diluted 1:50,000 - 100,000.
POSITIVE CONTROL:	1) Cat. No. XBL-10407 - Fetal Heart Tissue Lysate
PREDICTED MOLECULAR WEIGHT:	118 kDa

Ψ Properties

PURIFICATION:	Antibody is purified by peptide affinity chromatography method.
CLONALITY:	Polyclonal
CONJUGATE:	Unconjugated
PHYSICAL STATE:	Liquid

BUFFER:	Purified antibody supplied in 1x PBS buffer with 0.09% (w/v) sodium azide and 2% sucrose.
CONCENTRATION:	batch dependent
STORAGE CONDITIONS:	For short periods of storage (days) store at 4 °C. For longer periods of storage, store SR140 antibody at -20 °C. As with any antibody avoid repeat freeze-thaw cycles.

Additional Info

OFFICIAL SYMBOL:	U2SURP
ALTERNATE NAMES:	SR140, KIAA0332, MGC133197, SR140, fSAPa
ACCESSION NO.:	NP_001073884
PROTEIN GI NO.:	122937227
GENE ID:	23350
USER NOTE:	Optimal dilutions for each application to be determined by the researcher.

Background and References

BACKGROUND:	The specific function of SR140 is not yet known.
REFERENCES:	1) Will, C.L., (2002) EMBO J. 21 (18), 4978-4988.

ANTIBODIES FOR RESEARCH USE ONLY.

For additional information, visit ProSci's [Terms & Conditions Page](#).