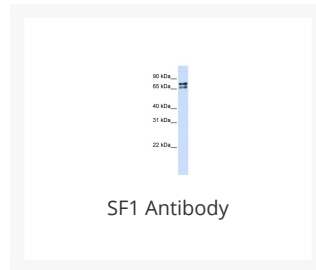




# SF1 Antibody

Cat. No.: 25-438



## Ψ Specifications

<b>HOST SPECIES:</b>	Rabbit
<b>SPECIES REACTIVITY:</b>	Human, Mouse, Rat
<b>IMMUNOGEN:</b>	Antibody produced in rabbits immunized with a synthetic peptide corresponding a region of human SF1.
<b>TESTED APPLICATIONS:</b>	ELISA, WB
<b>APPLICATIONS:</b>	SF1 antibody can be used for detection of SF1 by ELISA at 1:312500. SF1 antibody can be used for detection of SF1 by western blot at 1 µg/mL, and HRP conjugated secondary antibody should be diluted 1:50,000 - 100,000.
<b>POSITIVE CONTROL:</b>	1) Transfected 293T Cell Lysate
<b>PREDICTED MOLECULAR WEIGHT:</b>	68 kDa

## Ψ Properties

<b>PURIFICATION:</b>	Antibody is purified by peptide affinity chromatography method.
<b>CLONALITY:</b>	Polyclonal
<b>CONJUGATE:</b>	Unconjugated
<b>PHYSICAL STATE:</b>	Liquid

<b>BUFFER:</b>	Purified antibody supplied in 1x PBS buffer with 0.09% (w/v) sodium azide and 2% sucrose.
<b>CONCENTRATION:</b>	batch dependent
<b>STORAGE CONDITIONS:</b>	For short periods of storage (days) store at 4 °C. For longer periods of storage, store SF1 antibody at -20 °C. As with any antibody avoid repeat freeze-thaw cycles.

## Additional Info

<b>OFFICIAL SYMBOL:</b>	SF1
<b>ALTERNATE NAMES:</b>	SF1, D11S636, ZFM1, ZNF162, BBP, MBBP, ZCCHC25
<b>ACCESSION NO.:</b>	NP_004621
<b>PROTEIN GI NO.:</b>	42544130
<b>GENE ID:</b>	7536
<b>USER NOTE:</b>	Optimal dilutions for each application to be determined by the researcher.

## Background and References

<b>BACKGROUND:</b>	SF1 contains 1 CCHC-type zinc finger and 1 KH domain. SF1 is Necessary for the ATP-dependent first step of spliceosome assembly. It binds to the intron branch point sequence (BPS) 5'-UACUAAC-3' of the pre-mRNA. SF1 may act as transcription repressor.
<b>REFERENCES:</b>	1) Rino, J., (2008) Mol. Cell. Biol. 28 (9), 3045-3057.

### ANTIBODIES FOR RESEARCH USE ONLY.

For additional information, visit ProSci's [Terms & Conditions Page](#).