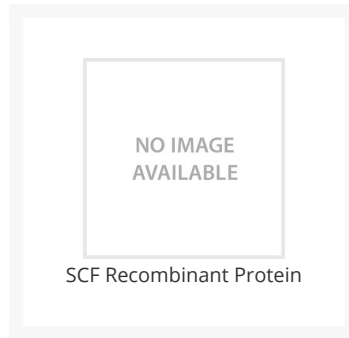




SCF Recombinant Protein

Cat. No.: 40-474



Ψ Specifications

SPECIES:	Rat
SOURCE SPECIES:	E. coli
SEQUENCE:	MQEICRNPVT DNVKDITKLV ANLPNDYMIT LNYVAGMDVL PSHCWLRDMV THLSVSLTTL LDKFSNISEG LSNYSIIDKL GKIVDDLAC MEENAPKNVK ESLKKPETRN FTPEEFSIF NRSIDAFKDF MVASDTSDCV LSSTLGPEKD SRVSVTKPFM LPPVA

Ψ Properties

PURITY:	Greater than 98% by SDS-PAGE gel and HPLC analyses. Endotoxin level is less than 0.1 ng per µg (1EU/µg).
PHYSICAL STATE:	Lyophilized
STORAGE CONDITIONS:	The lyophilized SCF recombinant protein is stable for at least 2 years from date of receipt at -20 °C. Reconstituted SCF is stable for at least 3 months when stored in working aliquots with a carrier protein at -20 °C. As with any protein, exposing SCF recombinant protein to repeated freeze / thaw cycles is not recommended. When working with proteins care should be taken to keep recombinant protein at a cool and stable temperature.

OFFICIAL SYMBOL:	Kitlg
ALTERNATE NAMES:	Mgf, SCF, Kitl, Mgf, Kit ligand, Hematopoietic growth factor KL, MGF
ACCESSION NO.:	NP_068615.1
PROTEIN GI NO.:	33667068
GENE ID:	60427

Background and References

BACKGROUND:	<p>Stem Cell Factor (SCF) is a hematopoietic growth factor that exerts its activity by signaling through the c-Kit receptor. SCF and c-Kit are essential for the survival, proliferation and differentiation of hematopoietic cells committed to the melanocyte and germ cell lineages. Human SCF manifests low activity on murine cells, while murine and rat SCF are fully active on human cells. Recombinant rat SCF is an 18.4 kDa polypeptide containing 154 amino acid residues, which corresponds to the sequence of the secreted soluble form of SCF.</p>
--------------------	---

ANTIBODIES FOR RESEARCH USE ONLY.

For additional information, visit ProSci's [Terms & Conditions Page](#).