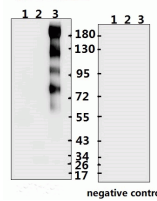




# SARS-CoV-2 (COVID-19) Spike S2 Antibody (IN)

Cat. No.: 10-526



**Figure 1 Western Blot Validation with Recombinant Protein**

Loading: 1?g of recombinant protein per lane. Lane 1: 10-007, Lane 2: 10-008 and Lane 3: 10-011. Antibodies: SARS-CoV-2 (COVID-19, 2019-nCoV) Spike S2, 10-526, 1:500. Secondary:

**ELISA experiment**

	1	2	
A	1.342	0.185	:1:1000
B	0.474	0.135	:1:10000
C	0.327	0.132	:1:20000
D	0.21	0.128	:1:40000
E	0.138	0.108	:1:80000
F	0.131	0.131	:1:160000
G	0.124	0.116	:1:320000
H	0.112	0.089	Blank control

**Figure 2 ELISA Test**

Coating original concentration: 2 µg/mL, 100 µL/well samples are column 1: SARS-CoV-2 (COVID-19) Spike-ECD Recombinant Protein, 10-011, and column 2: SARS-CoV-2 (COVID-19) Spike-RBD Recombinant Protein, 10-008.  
Antibodies: SARS-CoV-2 (COVID-19) Spike S2 Antibody, 10-526.  
Secondary: Goat anti-rabbit IgG HRP conjugate at 1:10000 dilution.  
Develop: 15min, 100 µL/well.  
Stop: Stop buffer 50 µL/well.

## Ψ Specifications

<b>HOST SPECIES:</b>	Rabbit
<b>SPECIES REACTIVITY:</b>	Virus
<b>IMMUNOGEN:</b>	Synthetic peptide located within the center of SARS-CoV-2 (COVID-19) Spike S1.
<b>TESTED APPLICATIONS:</b>	ELISA, WB
<b>APPLICATIONS:</b>	WB: 1:500-1000

<b>PURIFICATION:</b>	The antibody was affinity-purified from rabbit antiserum by affinity-chromatography using epitope-specific immunogen and the purity is > 95% (by SDS-PAGE).
<b>CLONALITY:</b>	Polyclonal
<b>ISOTYPE:</b>	IgG
<b>CONJUGATE:</b>	Unconjugated
<b>PHYSICAL STATE:</b>	Liquid
<b>BUFFER:</b>	PBS with 0.02% sodium azide, 10% glycerol, pH7.2
<b>CONCENTRATION:</b>	batch dependent
<b>STORAGE CONDITIONS:</b>	Store at 4 °C short term. Aliquot and store at -20 °C long term. Avoid freeze-thaw cycles.

Psi Additional Info

<b>OFFICIAL SYMBOL:</b>	S
<b>ALTERNATE NAMES:</b>	SARS-CoV-2 (COVID-19, 2019-nCoV) Spike Antibody: Severe acute respiratory syndrome coronavirus 2 (SARS-CoV-2), Surface Glycoprotein, Spike protein
<b>ACCESSION NO.:</b>	QHD43416.1
<b>GENE ID:</b>	43740568
<b>USER NOTE:</b>	Optimal dilutions for each application to be determined by the researcher.

**ANTIBODIES FOR RESEARCH USE ONLY.**

For additional information, visit ProSci's [Terms & Conditions Page](#).