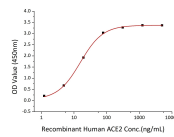


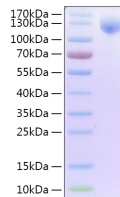


SARS-CoV-2 (COVID-19) Spike S1 Recombinant Protein

Cat. No.: 10-109



Immobilized SARS-CoV-2 (COVID-19) spike S1 recombinant protein at 2µg/mL (100 µL/well) can bind recombinant human ACE2 with a linear range of 1.5-15 ng/mL.



SARS-CoV-2 (COVID-19) spike S1 recombinant protein on Tris-Bis PAGE under reduced condition. The purity is greater than 95%.

Ψ Specifications

SPECIES:	SARS-CoV-2 (COVID-19, 2019-nCoV) Spike Protein
SOURCE SPECIES:	HEK293 cells
SEQUENCE:	Gln14-Arg683
FUSION TAG:	His tag and Avi at C-terminus
TESTED APPLICATIONS:	ELISA, WB
APPLICATIONS:	This recombinant protein can be used for WB, ELISA. For research use only.
PREDICTED MOLECULAR WEIGHT:	77.7 kDa

Ψ Properties

PURITY:	> 95% by SDS-PAGE.
PHYSICAL STATE:	Lyophilized
BUFFER:	PBS, pH 7.4
STORAGE CONDITIONS:	Store the lyophilized protein at -20 °C to -20 °C for long term. After reconstitution, the protein solution is stable at -20 °C for 3 months, at 2-8 °C for up to 1 week

Ψ Additional Info

OFFICIAL SYMBOL:	S
ALTERNATE NAMES:	S1 protein, Spike glycoprotein subunit 1, S glycoprotein subunit 1, Spike protein S1, Novel coronavirus S1 protein
ACCESSION NO.:	YP_009724390.1
GENE ID:	43740568

Ψ Background and References

BACKGROUND:	The spike protein (S) of coronavirus (CoV) attaches the virus to its cellular receptor, angiotensin-converting enzyme 2 (ACE2). A defined receptor-binding domain (RBD) on S mediates this interaction. The S protein plays key parts in the induction of neutralizing-antibody and T-cell responses as well as protective immunity.
--------------------	--

ANTIBODIES FOR RESEARCH USE ONLY.

For additional information, visit ProSci's [Terms & Conditions Page](#).