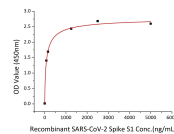


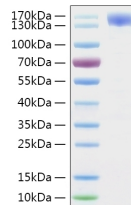


# SARS-CoV-2 (COVID-19) Spike S1 Recombinant Protein

Cat. No.: 10-107



Immobilized recombinant human ACE2 at 2µg/mL (100 µL/well) can bind SARS-CoV-2 (COVID-19) spike S1 recombinant protein with a linear range of 78-82.5 ng/mL.



SARS-CoV-2 (COVID-19) spike S1 recombinant protein was determined by SDS-PAGE with Coomassie Blue, showing a band at 130-160 kDa.

## Ψ Specifications

|                                    |  |
|------------------------------------|--|
| <b>SPECIES:</b>                    | SARS-CoV-2 (COVID-19, 2019-nCoV) Spike Protein                             |
| <b>SOURCE SPECIES:</b>             | HEK293 cells   |
| <b>SEQUENCE:</b>                   | Val11-Arg682   |
| <b>FUSION TAG:</b>                 | Fc, His tag at C-terminus  |
| <b>TESTED APPLICATIONS:</b>        | ELISA, WB  |
| <b>APPLICATIONS:</b>               | This recombinant protein can be used for WB, ELISA. For research use only. |
| <b>PREDICTED MOLECULAR WEIGHT:</b> | 103 kDa  |

## Ψ Properties

|                            |  |
|----------------------------|--|
| <b>PURITY:</b>             | > 95% by SDS-PAGE.   |
| <b>PHYSICAL STATE:</b>     | Lyophilized  |
| <b>BUFFER:</b>             | PBS, pH 7.4  |
| <b>STORAGE CONDITIONS:</b> | Store the lyophilized protein at -20 °C to -70 °C for long term. After reconstitution, the protein solution is stable at -20 °C for 3 months, at 2-8 °C for up to 1 week |

## Ψ Additional Info

|                         |  |
|-------------------------|--|
| <b>OFFICIAL SYMBOL:</b> | S  |
| <b>ALTERNATE NAMES:</b> | S1 protein, Spike glycoprotein subunit 1, S glycoprotein subunit 1, Spike protein S1, Novel coronavirus S1 protein |
| <b>ACCESSION NO.:</b>   | YP_009724390.1   |
| <b>GENE ID:</b>         | 43740568   |

## Ψ Background and References

|                    |  |
|--------------------|--|
| <b>BACKGROUND:</b> | The spike protein (S) of coronavirus (CoV) attaches the virus to its cellular receptor, angiotensin-converting enzyme 2 (ACE2). A defined receptor-binding domain (RBD) on S mediates this interaction. The S protein plays key parts in the induction of neutralizing-antibody and T-cell responses as well as protective immunity. |
|--------------------|--|

### ANTIBODIES FOR RESEARCH USE ONLY.

For additional information, visit ProSci's [Terms & Conditions Page](#).