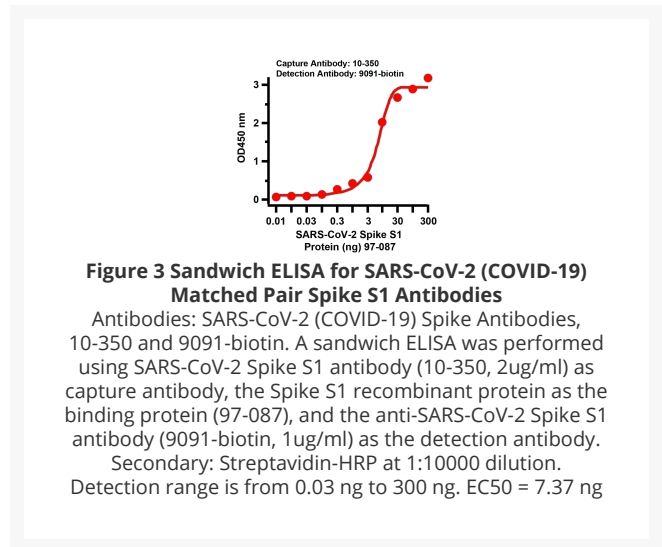
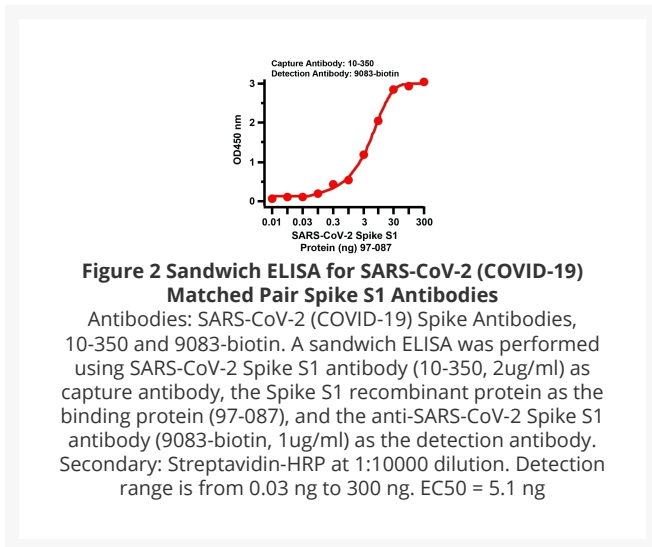
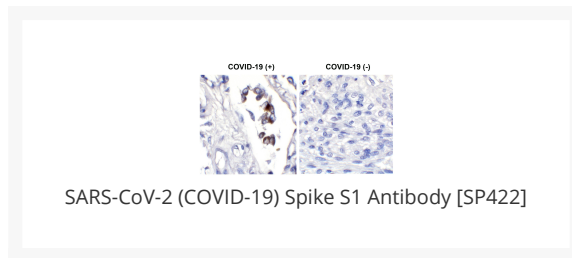




SARS-CoV-2 (COVID-19) Spike S1 Antibody [SP422]

Cat. No.: 10-350



Ψ Specifications

HOST SPECIES:	Rabbit
SPECIES REACTIVITY:	Virus
IMMUNOGEN:	Recombinant SARS-CoV-2 spike protein, S1 subunit.
TESTED APPLICATIONS:	ELISA, IHC

PURIFICATION:	The antibody was expressed in HEK293F cells, and subsequently obtained from cell supernatant by protein A affinity chromatography.
CLONALITY:	Monoclonal
ISOTYPE:	IgG, kappa
CONJUGATE:	Unconjugated
PHYSICAL STATE:	Liquid
BUFFER:	PBS pH7.2
CONCENTRATION:	batch dependent
STORAGE CONDITIONS:	SARS-CoV-2 (COVID-19) Spike S1 antibody can be stored at 4 °C for three months and -20 °C, stable for up to one year. As with all antibodies care should be taken to avoid repeated freeze thaw cycles. Antibodies should not be exposed to prolonged high temperatures.



OFFICIAL SYMBOL:	S
ALTERNATE NAMES:	SARS-CoV-2 (COVID-19) Spike S1 Antibody; Severe acute respiratory syndrome coronavirus 2 (SARS-CoV-2), Surface Glycoprotein, Spike protein
ACCESSION NO.:	QHD43416
PROTEIN GI NO.:	1791269090
GENE ID:	43740568
USER NOTE:	Optimal dilutions for each application to be determined by the researcher.

ANTIBODIES FOR RESEARCH USE ONLY.

For additional information, visit ProSci's [Terms & Conditions Page](#).