



SARS-CoV-2 (COVID-19) Spike S1 Antibody (IN)

Cat. No.: 10-524

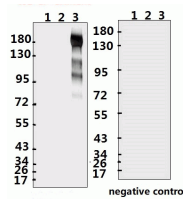


Figure 1 Western Blot Validation with Recombinant Protein

Loading: 1?g of recombinant protein ~ per lane. Lane 1: 10-007, Lane 2: 10-008 and Lane 3: 10-011. Antibodies: SARS-CoV-2 (COVID-19, 2019-nCoV) Spike S1, 10-524, 1:500. Secondar

ELISA experiment

	1	2	
A	1.153	0.135	:1:1000
B	0.307	0.129	:1:10000
C	0.211	0.118	:1:200000
D	0.154	0.1	:1:400000
E	0.106	0.143	:1:80000
F	0.111	0.141	:1:160000
G	0.093	0.106	:1:320000
H	0.126	0.101	Blank control

Figure 2 ELISA Test

Coating original concentration: 2 µg/mL, 100 µL/well samples are column 1: SARS-CoV-2 (COVID-19) Spike-ECD Recombinant Protein, 10-011, and column 2: SARS-CoV-2 (COVID-19) Spike-RBD Recombinant Protein, 10-008.
Antibodies: SARS-CoV-2 (COVID-19) Spike S1 Antibody, 10-524.
Secondary: Goat anti-rabbit IgG HRP conjugate at 1:10000 dilution.
Develop: 15min, 100 µL/well.
Stop: Stop buffer 50 µL/well.

Ψ Specifications

HOST SPECIES:	Rabbit
SPECIES REACTIVITY:	Virus
IMMUNOGEN:	Synthetic peptide located within the center of SARS-CoV-2 (COVID-19) Spike S1.
TESTED APPLICATIONS:	ELISA, WB
APPLICATIONS:	WB: 1:500-1000

PURIFICATION:	The antibody was affinity-purified from rabbit antiserum by affinity-chromatography using epitope-specific immunogen and the purity is > 95% (by SDS-PAGE).
CLONALITY:	Polyclonal
ISOTYPE:	IgG
CONJUGATE:	Unconjugated
PHYSICAL STATE:	Liquid
BUFFER:	PBS with 0.02% sodium azide, 10% glycerol, pH7.2
CONCENTRATION:	batch dependent
STORAGE CONDITIONS:	Store at 4 °C short term. Aliquot and store at -20 °C long term. Avoid freeze-thaw cycles.



OFFICIAL SYMBOL:	S
ALTERNATE NAMES:	SARS-CoV-2 (COVID-19, 2019-nCoV) Spike Antibody: Severe acute respiratory syndrome coronavirus 2 (SARS-CoV-2), Surface Glycoprotein, Spike protein
ACCESSION NO.:	QHD43416.1
GENE ID:	43740568
USER NOTE:	Optimal dilutions for each application to be determined by the researcher.

ANTIBODIES FOR RESEARCH USE ONLY.

For additional information, visit ProSci's [Terms & Conditions Page](#).