



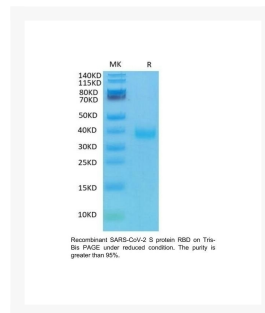
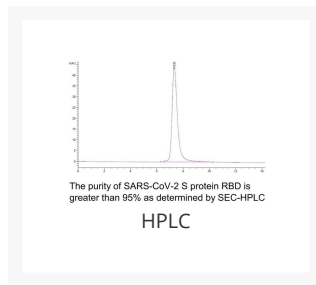
**ProSci Incorporated**  
12170 Flint Place  
Poway, CA 92064

**Toll Free:** +1 (888) 513 9525  
**Local:** +1 (858) 513 2638  
**Fax:** +1 (858) 513 2692

techsupport@prosci-inc.com

# SARS-CoV-2 (COVID-19) Spike RBD Recombinant Protein

Cat. No.: 10-204



## Ψ Specifications

<b>SPECIES:</b>	SARS-CoV-2 (COVID-19) Spike Protein
<b>SOURCE SPECIES:</b>	HEK293 cells
<b>SEQUENCE:</b>	Arg319-Asn532
<b>FUSION TAG:</b>	His-Avi Tag
<b>TESTED APPLICATIONS:</b>	ELISA, WB
<b>APPLICATIONS:</b>	SDS-PAGE
<b>PREDICTED MOLECULAR WEIGHT:</b>	Predicted: 27kD Observed: 36-40kD due to glycosylation

## Ψ Properties

<b>PURITY:</b>	> 95% as determined by Bis-Tris PAGE; > 95% as determined by HPLC
<b>PHYSICAL STATE:</b>	Lyophilized
<b>BUFFER:</b>	20mM PB (pH 7.4). 5 % trehalose is added as protectant before lyophilization.
<b>STORAGE CONDITIONS:</b>	Store in working aliquots at -20 °C. Avoid freeze/thaw cycles.

## Ψ Additional Info

<b>ALTERNATE NAMES:</b>	S protein RBD, Spike glycoprotein Receptor-binding domain, S glycoprotein RBD, Spike protein RBD
<b>ACCESSION NO.:</b>	QHD43416.1

## Ψ Background and References

<b>BACKGROUND:</b>	The spike protein (S) of coronavirus (CoV) attaches the virus to its cellular receptor, angiotensin converting enzyme 2 (ACE2). A defined receptor-binding domain (RBD) on S mediates this interaction. The S protein plays key parts in the induction of neutralizing-antibody and T-cell responses, as well as protective immunity.
--------------------	---

### ANTIBODIES FOR RESEARCH USE ONLY.

For additional information, visit ProSci's [Terms & Conditions Page](#).