



SARS-CoV-2 (COVID-19) Spike RBD Monoclonal Antibody (B002-Biotin)

Cat. No.: 10-557

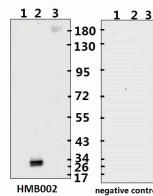


Figure 1 Western Blot Validation with Recombinant Protein

Loading: 1µg of recombinant protein per lane. Lane 1: 10-007, Lane 2: 10-008 and Lane 3: 10-011. Antibodies: SARS-CoV-2 (COVID-19) Spike-ECD/RBD Monoclonal, 10-557, 1:500. Secon

Ψ Specifications

HOST SPECIES:	Human
SPECIES REACTIVITY:	Virus
IMMUNOGEN:	S-RBD recombianant protein
TESTED APPLICATIONS:	ELISA, Neut, WB
APPLICATIONS:	WB: 1:1000~2000

Ψ Properties

PURIFICATION:	Greater than 95% as determined by reducing SDS-PAGE.
CLONALITY:	Monoclonal
CONJUGATE:	Biotin
PHYSICAL STATE:	Liquid
BUFFER:	PBS with 0.02% sodium azide, 10% glycerol, pH7.2
CONCENTRATION:	1 mg/mL

STORAGE CONDITIONS:

Store at 4 °C short term. Aliquot and store at -20 °C long term. Avoid freeze-thaw cycles.

Ψ Additional Info

OFFICIAL SYMBOL:	S
ALTERNATE NAMES:	SARS-CoV-2 (COVID-19, 2019-nCoV) Spike Antibody: Severe acute respiratory syndrome coronavirus 2 (SARS-CoV-2), Surface Glycoprotein, Spike protein
ACCESSION NO.:	QHD43416.1
GENE ID:	43740568
USER NOTE:	Optimal dilutions for each application to be determined by the researcher.

Ψ Background and References

BACKGROUND:	SARS-CoV-2 (Severe Acute Respiratory Syndrome Coronavirus 2) also known as 2019-nCoV (2019 Novel Coronavirus) is a virus that causes illnesses ranging from the common cold to severe diseases. SARS CoV-2 Spike Protein derived from 2019-nCoV is composed of S1 domain and S2 domain. The S1 contains a receptor-binding domain (RBD) that can specifically bind to angiotensin-converting enzyme 2 (ACE2), the receptor on target cells.
--------------------	---

ANTIBODIES FOR RESEARCH USE ONLY.

For additional information, visit ProSci's [Terms & Conditions Page](#).