



SARS-CoV-2 (COVID-19) Spike RBD Antibody

Cat. No.: 10-529

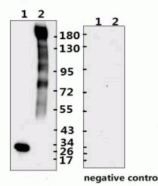


Figure 1 Western Blot Validation with Recombinant Protein

Loading: 1µg of recombinant protein per lane. Lane 1: 10-007, Lane 2: 10-008 and Lane 3: 10-011. Antibodies: SARS-CoV-2 (COVID-19) Spike RBD, 10-529, 1:500. Secondary: Goat anti

Ψ Specifications

| | |
|-----------------------------|---------------------------|
| HOST SPECIES: | Rabbit |
| SPECIES REACTIVITY: | Virus |
| IMMUNOGEN: | S-RBD recombinant protein |
| TESTED APPLICATIONS: | ELISA, WB |
| APPLICATIONS: | WB: 1:2000-10000 |

Ψ Properties

| | |
|------------------------|---|
| PURIFICATION: | The antibody was affinity-purified from rabbit antiserum by affinity-chromatography using epitope-specific immunogen and the purity is > 95% (by SDS-PAGE). |
| CLONALITY: | Polyclonal |
| ISOTYPE: | IgG |
| CONJUGATE: | Unconjugated |
| PHYSICAL STATE: | Liquid |
| BUFFER: | PBS with 0.02% sodium azide, 10% glycerol, pH7.2 |

| | |
|----------------------------|--|
| CONCENTRATION: | 1 mg/mL |
| STORAGE CONDITIONS: | Store at 4 °C short term. Aliquot and store at -20 °C long term. Avoid freeze-thaw cycles. |

Additional Info

| | |
|-------------------------|--|
| OFFICIAL SYMBOL: | S |
| ALTERNATE NAMES: | SARS-CoV-2 (COVID-19, 2019-nCoV) Spike Antibody: Severe acute respiratory syndrome coronavirus 2 (SARS-CoV-2), Surface Glycoprotein, Spike protein |
| ACCESSION NO.: | QHD43416.1 |
| GENE ID: | 43740568 |
| USER NOTE: | Optimal dilutions for each application to be determined by the researcher. |

ANTIBODIES FOR RESEARCH USE ONLY.

For additional information, visit ProSci's [Terms & Conditions Page](#).