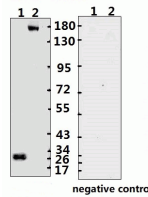




# SARS-CoV-2 (COVID-19) Spike ECD Monoclonal Antibody [B004]

Cat. No.: 10-563



**Figure 1 Western Blot Validation with Recombinant Protein**

Loading: 1 µg of recombinant protein per lane. Lane 1: 10-008 and Lane 2: 10-011. Antibodies: ARS-CoV-2 (COVID-19, 2019-nCoV) Spike-ECD Monoclonal, 10-563, 1:500. Secondary: Goa

| ELISA experiment |       |       |               |
|------------------|-------|-------|---------------|
|                  | 1     | 2     |               |
| A                | 0.082 | 2.477 | 1:10000       |
| B                | 0.132 | 2.109 | 1:20000       |
| C                | 0.127 | 2.039 | 1:40000       |
| D                | 0.134 | 1.72  | 1:80000       |
| E                | 0.109 | 1.317 | 1:160000      |
| F                | 0.12  | 0.863 | 1:320000      |
| G                | 0.123 | 0.538 | 1:640000      |
| H                | 0.082 | 0.154 | Blank control |

**Figure 2 ELISA Test**

Coating original concentration: 2 µg/mL, 100 µL/well samples are column 1: SARS-CoV-2 (COVID-19) Spike-RBD Recombinant Protein, 10-008, and column 2: SARS-CoV-2 (COVID-19) Spike-ECD Recombinant Protein, 10-011.  
Antibodies: SARS-CoV-2 (COVID-19) Spike-ECD Monoclonal Antibody, 10-563.  
Secondary: Goat anti-human IgG HRP conjugate at 1:10000 dilution.  
Develop: 15min, 100 µL/well.  
Stop: Stop buffer 50 µL/well.  
10-563 doesn't react with 10-008.

## Ψ Specifications

|                             |                                      |
|-----------------------------|--------------------------------------|
| <b>HOST SPECIES:</b>        | Human                                |
| <b>SPECIES REACTIVITY:</b>  | Virus                                |
| <b>IMMUNOGEN:</b>           | S-ECD recombinant protein            |
| <b>TESTED APPLICATIONS:</b> | ELISA, Neut, WB                      |
| <b>APPLICATIONS:</b>        | ELISA: ECD-1:160000; WB: 1:2000~3000 |

|                            |  |
|----------------------------|--|
| <b>PURIFICATION:</b>       | Greater than 95% as determined by reducing SDS-PAGE.                                       |
| <b>CLONALITY:</b>          | Monoclonal   |
| <b>CONJUGATE:</b>          | Unconjugated   |
| <b>PHYSICAL STATE:</b>     | Liquid   |
| <b>BUFFER:</b>             | PBS with 0.02% sodium azide, 10% glycerol, pH7.2   |
| <b>CONCENTRATION:</b>      | batch dependent  |
| <b>STORAGE CONDITIONS:</b> | Store at 4 °C short term. Aliquot and store at -20 °C long term. Avoid freeze-thaw cycles. |

## Additional Info

|                         |  |
|-------------------------|--|
| <b>OFFICIAL SYMBOL:</b> | S  |
| <b>ALTERNATE NAMES:</b> | SARS-CoV-2 (COVID-19, 2019-nCoV) Spike Antibody: Severe acute respiratory syndrome coronavirus 2 (SARS-CoV-2), Surface Glycoprotein, Spike protein |
| <b>ACCESSION NO.:</b>   | QHD43416.1   |
| <b>GENE ID:</b>         | 43740568   |
| <b>USER NOTE:</b>       | Optimal dilutions for each application to be determined by the researcher.   |

## Background and References

|                    |   |
|--------------------|---|
| <b>BACKGROUND:</b> | SARS-CoV-2 (Severe Acute Respiratory Syndrome Coronavirus 2) also known as 2019-nCoV (2019 Novel Coronavirus) is a virus that causes illnesses ranging from the common cold to severe diseases. SARS CoV-2 Spike Protein derived from 2019-nCoV is composed of S1 domain and S2 domain. The S1 contains a receptor-binding domain (RBD) that can specifically bind to angiotensin-converting enzyme 2 (ACE2), the receptor on target cells. |
|--------------------|---|

### **ANTIBODIES FOR RESEARCH USE ONLY.**

For additional information, visit ProSci's [Terms & Conditions Page](#).