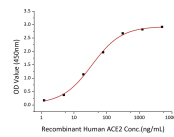


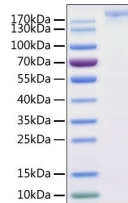


# SARS-CoV-2 (COVID-19) S1+S2 ECD (S-ECD) Recombinant Protein

Cat. No.: 10-121



Immobilized SARS-CoV-2 (COVID-19) S1+S2 ECD (S-ECD) recombinant protein at 2µg/mL (100 µL/well) can bind recombinant human ACE2 with a linear range of 1.5-35.1 ng/mL.



SARS-CoV-2 (COVID-19) S1+S2 ECD (S-ECD) recombinant protein was determined by SDS-PAGE with Coomassie Blue, showing a band at 170-220 kDa.

## Ψ Specifications

<b>SPECIES:</b>	SARS-CoV-2 (COVID-19) Spike Protein
<b>SOURCE SPECIES:</b>	HEK293 cells
<b>SEQUENCE:</b>	Cys15-Gln1208 with mutation in the cleavage site (683 G)
<b>FUSION TAG:</b>	His tag at C-terminus
<b>TESTED APPLICATIONS:</b>	ELISA, WB
<b>APPLICATIONS:</b>	This recombinant protein can be used for WB. For research use only.
<b>PREDICTED MOLECULAR WEIGHT:</b>	132.29a

<b>PURITY:</b>	> 97% as determined by SDS-PAGE.
<b>PHYSICAL STATE:</b>	Liquid
<b>BUFFER:</b>	PBS, pH 7.4
<b>STORAGE CONDITIONS:</b>	This product is stable at $\leq -70^{\circ}\text{C}$ for up to 6 months from the date of receipt. For optimal storage, aliquot into smaller quantities after centrifugation and store at recommended temperature. Avoid repeated freeze-thaw cycles.

## Ψ Additional Info

<b>OFFICIAL SYMBOL:</b>	S
<b>ALTERNATE NAMES:</b>	2019-nCoV spike protein, 2019-nCoV S glycoprotein, COVID-19 S protein, Spike glycoprotein, SARS-CoV-2 Spike
<b>ACCESSION NO.:</b>	QHD43416.1)
<b>GENE ID:</b>	43740568

## Ψ Background and References

<b>BACKGROUND:</b>	The spike protein (S) of coronavirus (CoV) attaches the virus to its cellular receptor, angiotensin-converting enzyme 2 (ACE2). A defined receptor-binding domain (RBD) on S mediates this interaction. The S protein plays key parts in the induction of neutralizing-antibody and T-cell responses as well as protective immunity.
--------------------	--------------------------------------------------------------------------------------------------------------------------------------------------------------------------------------------------------------------------------------------------------------------------------------------------------------------------------------

### ANTIBODIES FOR RESEARCH USE ONLY.

For additional information, visit ProSci's [Terms & Conditions Page](#).