



SARS-CoV-2 (COVID-19) Nucleocapsid Antibody [NP1189]

Cat. No.: 10-353

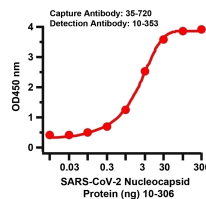
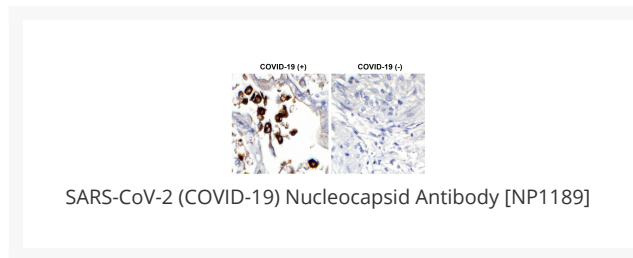


Figure 2 Sandwich ELISA for SARS-CoV-2 (COVID-19) Matched Pair Nucleocapsid Antibodies

Antibodies: SARS-CoV-2 (COVID-19) Nucleocapsid Antibodies, 35-720 and 10-353. A sandwich ELISA was performed using SARS-CoV-2 Nucleocapsid antibody (35-720, 2ug/ml) as capture antibody, the Nucleocapsid recombinant protein as the binding protein (10-306), and the anti-SARS-CoV-2 Nucleocapsid antibody (10-353, 0.1ug/ml) as the detection antibody. Secondary: Goat anti-rabbit IgG HRP conjugate at 1:20000 dilution. Detection range is from 0.03 ng to 300 ng. EC50 = 6.9 ng

Ψ Specifications

HOST SPECIES:	Rabbit
SPECIES REACTIVITY:	Virus
IMMUNOGEN:	Recombinant SARS-CoV-2 nucleocapsid protein (full-length).
TESTED APPLICATIONS:	ELISA, IHC

Ψ Properties

PURIFICATION:	The antibody was expressed in HEK293F cells, and subsequently obtained from cell supernatant by protein A affinity chromatography.
CLONALITY:	Monoclonal
ISOTYPE:	IgG, kappa
CONJUGATE:	Unconjugated
PHYSICAL STATE:	Liquid
BUFFER:	PBS pH7.2
CONCENTRATION:	1 mg/mL
STORAGE CONDITIONS:	SARS-CoV-2 (COVID-19) Nucleocapsid antibody can be stored at 4 °C for three months and -20 °C, stable for up to one year. As with all antibodies care should be taken to avoid repeated freeze thaw cycles. Antibodies should not be exposed to prolonged high temperatures.

Additional Info

OFFICIAL SYMBOL:	N
ALTERNATE NAMES:	SARS-CoV-2 (COVID-19) Nucleocapsid antibody: Severe acute respiratory syndrome coronavirus 2 (SARS-CoV-2), Nucleocapsid protein, N protein, Nucleocapsid Phosphoprotein
ACCESSION NO.:	QHD43423
PROTEIN GI NO.:	1820552696
GENE ID:	43740575
USER NOTE:	Optimal dilutions for each application to be determined by the researcher.

ANTIBODIES FOR RESEARCH USE ONLY.

For additional information, visit ProSci's [Terms & Conditions Page](#).