



SARS-CoV-2 (COVID-19) Nucleocapsid Antibody (NT)

Cat. No.: 10-508

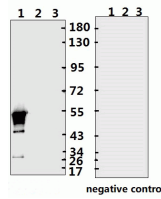


Figure 1 Western Blot Validation with Recombinant Protein

Loading: 1µg of recombinant protein per lane. Lane 1: 10-007, Lane 2: 10-008 and Lane 3: 10-011. Antibodies: SARS-CoV-2 (COVID-19) Nucleocapsid, 10-508, 1:500. Secondary: Goat a

ELISA experiment	
	1
A	2.133 -1:100
B	2.103 -1:200
C	1.445 -1:500
D	1.037 -1:1000
E	0.494 -1:5000
F	0.52 -1:10000
G	0.469 -1:20000
H	0.167 Blank control

Figure 2 ELISA Test

Coating original concentration: 2 µg/mL, 100 µL/well sample is SARS-CoV-2 (COVID-19) Nucleocapsid Recombinant Protein, 10-007. Antibodies: SARS-CoV-2 (COVID-19) Nucleocapsid Antibody, 10-508. Secondary: Goat anti-rabbit IgG HRP conjugate at 1:10000 dilution. Develop: 15min, 100 µL/well.

Stop: Stop buffer 50 µL/well. Coating original concentration: 2 µg/mL, 100 µL/hole sample is SARS-CoV-2 (COVID-19) Nucleocapsid Recombinant Protein, 10-007. Antibodies: SARS-CoV-2 (COVID-19) Nucleocapsid Antibody, 10-508. Secondary: Goat anti-rabbit IgG HRP conjugate at 1:10000 dilution. Develop: 15min, 100 µL/hole. Stop: Stop buffer 50 µL/hole.

Ψ Specifications

HOST SPECIES:	Rabbit
SPECIES REACTIVITY:	Virus
IMMUNOGEN:	Synthetic peptide

TESTED APPLICATIONS:	ELISA, WB
APPLICATIONS:	WB: 1:500-1000

Properties

PURIFICATION:	The antibody was affinity-purified from rabbit antiserum by affinity-chromatography using epitope-specific immunogen and the purity is > 95% (by SDS-PAGE).
CLONALITY:	Polyclonal
ISOTYPE:	IgG
CONJUGATE:	Unconjugated
PHYSICAL STATE:	Liquid
BUFFER:	PBS with 0.02% sodium azide, 10% glycerol, pH7.2
CONCENTRATION:	1 mg/mL
STORAGE CONDITIONS:	Store at 4 °C short term. Aliquot and store at -20 °C long term. Avoid freeze-thaw cycles.

Additional Info

OFFICIAL SYMBOL:	N
ALTERNATE NAMES:	SARS-CoV-2 (COVID-19, 2019-nCoV) Nucleocapsid Antibody: Severe acute respiratory syndrome coronavirus 2 (SARS-CoV-2), Nucleocapsid Phosphoprotein, Nucleocapsid protein
ACCESSION NO.:	QHD43423.2
GENE ID:	43740575
USER NOTE:	Optimal dilutions for each application to be determined by the researcher.

ANTIBODIES FOR RESEARCH USE ONLY.

For additional information, visit ProSci's [Terms & Conditions Page](#).