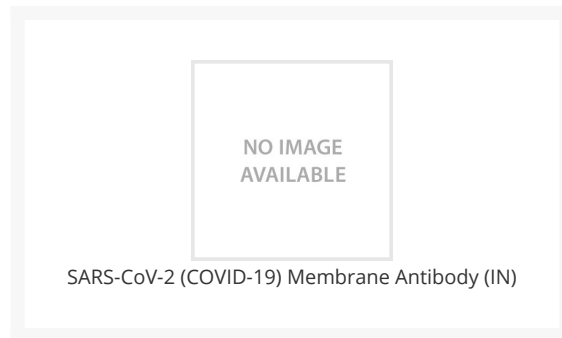




SARS-CoV-2 (COVID-19) Membrane Antibody (IN)

Cat. No.: 10-516



Ψ Specifications

HOST SPECIES:	Rabbit
SPECIES REACTIVITY:	Virus
IMMUNOGEN:	Synthetic peptide
TESTED APPLICATIONS:	ELISA, WB
APPLICATIONS:	WB: 1:500-1000

Ψ Properties

PURIFICATION:	The antibody was affinity-purified from rabbit antiserum by affinity-chromatography using epitope-specific immunogen and the purity is > 95% (by SDS-PAGE).
CLONALITY:	Polyclonal
ISOTYPE:	IgG
CONJUGATE:	Unconjugated
PHYSICAL STATE:	Liquid
BUFFER:	PBS with 0.02% sodium azide, 10% glycerol, pH7.2

CONCENTRATION:	1 mg/mL
STORAGE CONDITIONS:	Store at 4 °C short term. Aliquot and store at -20 °C long term. Avoid freeze-thaw cycles.

Additional Info

OFFICIAL SYMBOL:	M
ALTERNATE NAMES:	SARS-CoV-2 (COVID-19, 2019-nCoV) Membrane Antibody: Severe acute respiratory syndrome coronavirus 2 (SARS-CoV-2), E1 Glycoprotein, Membrane protein, M protein
ACCESSION NO.:	QHD43419.1
GENE ID:	43740571
USER NOTE:	Optimal dilutions for each application to be determined by the researcher.

ANTIBODIES FOR RESEARCH USE ONLY.

For additional information, visit ProSci's [Terms & Conditions Page](#).