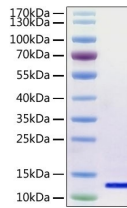




SARS-CoV-2 (COVID-19) Envelope Recombinant Protein

Cat. No.: 10-112



SARS-CoV-2 (COVID-19) envelope recombinant protein was determined by SDS-PAGE with Coomassie Blue, showing a band at 12 kDa.

Ψ Specifications

SPECIES:	SARS-CoV-2 (COVID-19, 2019-nCoV) Envelope Protein
SOURCE SPECIES:	E. coli
SEQUENCE:	Met1-Val75
FUSION TAG:	His tag and Avi tag at N-terminus
TESTED APPLICATIONS:	WB
APPLICATIONS:	This recombinant protein can be used for WB. For research use only.
PREDICTED MOLECULAR WEIGHT:	11.4 kDa

Ψ Properties

PURITY:	> 92% as determined by SDS-PAGE.
PHYSICAL STATE:	Liquid
BUFFER:	20mM Tris, 250mM NaCl, 0.5% TritonX-100, pH 8.0

STORAGE CONDITIONS:

This product is stable at $\leq -70^{\circ}\text{C}$ for up to 6 months from the date of receipt. For optimal storage, aliquot into smaller quantities after centrifugation and store at recommended temperature. Avoid repeated freeze-thaw cycles.

 Additional Info

OFFICIAL SYMBOL:	E
ALTERNATE NAMES:	2019-nCoV E protein, Envelope protein, Env polyprotein, Envelope glycoprotein
ACCESSION NO.:	QHD43418.1
GENE ID:	43740570

ANTIBODIES FOR RESEARCH USE ONLY.

For additional information, visit ProSci's [Terms & Conditions Page](#).