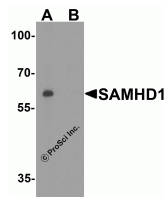




# SAMHD1 Peptide

Cat. No.: 8007P



Western blot analysis of SAMHD1 in Daudi cell lysate with SAMHD1 antibody at 1 µg/ml in (A) the absence and (B) the presence of blocking peptide.

## Ψ Specifications

<b>SPECIES:</b>	Human
<b>TESTED APPLICATIONS:</b>	Blocking
<b>APPLICATIONS:</b>	SAMHD1 peptide is used for blocking the activity of SAMHD1 antibody.

## Ψ Properties

<b>PHYSICAL STATE:</b>	Liquid
<b>BUFFER:</b>	PBS pH 7.2 (10 mM NaH <sub>2</sub> PO <sub>4</sub> , 10 mM Na <sub>2</sub> HPO <sub>4</sub> , 130 mM NaCl) containing 0.1% bovine serum albumin and 0.02% sodium azide
<b>CONCENTRATION:</b>	200 µg/mL
<b>STORAGE CONDITIONS:</b>	Store SAMHD1 peptide at -20 °C, stable for one year.

## Ψ Additional Info

<b>OFFICIAL SYMBOL:</b>	SAMHD1
<b>ALTERNATE NAMES:</b>	SAM domain and HD domain 1, DCIP, CHBL2, HDDC1, MOP-5, SBBI88

<b>ACCESSION NO.:</b>	NP_056289
<b>PROTEIN GI NO.:</b>	38016914
<b>GENE ID:</b>	25939

## Background and References

---

<b>REFERENCES:</b>	1) Rice GI, Bond J, Asipu A, et al. Mutations involved in Aicardi-Goutieres syndrome implicate SAMHD1 as regulator of the innate immune system. Nat. Genet. 2009; 41:829-32.
--------------------	--

---

### **ANTIBODIES FOR RESEARCH USE ONLY.**

For additional information, visit ProSci's [Terms & Conditions Page](#).