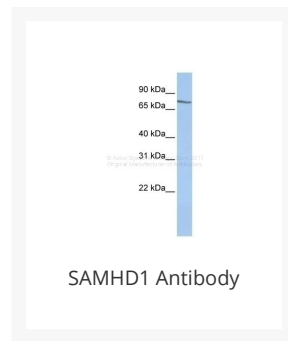




# SAMHD1 Antibody

Cat. No.: 26-987



## Ψ Specifications

<b>HOST SPECIES:</b>	Rabbit
<b>SPECIES REACTIVITY:</b>	Human, Mouse
<b>IMMUNOGEN:</b>	Antibody produced in rabbits immunized with a synthetic peptide corresponding a region of human SAMHD1.
<b>TESTED APPLICATIONS:</b>	ELISA, WB
<b>APPLICATIONS:</b>	SAMHD1 antibody can be used for detection of SAMHD1 by ELISA at 1:62500. SAMHD1 antibody can be used for detection of SAMHD1 by western blot at 1 µg/mL, and HRP conjugated secondary antibody should be diluted 1:50,000 - 100,000.
<b>POSITIVE CONTROL:</b>	1) Cat. No. 1211 - HepG2 Cell Lysate
<b>PREDICTED MOLECULAR WEIGHT:</b>	72 kDa

<b>PURIFICATION:</b>	Antibody is purified by peptide affinity chromatography method.
<b>CLONALITY:</b>	Polyclonal
<b>CONJUGATE:</b>	Unconjugated
<b>PHYSICAL STATE:</b>	Liquid
<b>BUFFER:</b>	Purified antibody supplied in 1x PBS buffer with 0.09% (w/v) sodium azide and 2% sucrose.
<b>CONCENTRATION:</b>	batch dependent
<b>STORAGE CONDITIONS:</b>	For short periods of storage (days) store at 4 °C. For longer periods of storage, store SAMHD1 antibody at -20 °C. As with any antibody avoid repeat freeze-thaw cycles.

## Ψ Additional Info

<b>OFFICIAL SYMBOL:</b>	SAMHD1
<b>ALTERNATE NAMES:</b>	SAMHD1, DCIP, HDDC1, MOP-5, SBBI88, CHBL2
<b>ACCESSION NO.:</b>	NP_056289
<b>PROTEIN GI NO.:</b>	38016914
<b>GENE ID:</b>	25939
<b>USER NOTE:</b>	Optimal dilutions for each application to be determined by the researcher.

## Ψ Background and References

<b>BACKGROUND:</b>	SAMHD1 contains 1 HD domain and 1 SAM (sterile alpha motif) domain. SAMHD1 may play a role in mediating proinflammatory responses to TNF-alpha signaling.
<b>REFERENCES:</b>	1) Olsen, J.V., (2006) Cell 127 (3), 635-648.

### ANTIBODIES FOR RESEARCH USE ONLY.

For additional information, visit ProSci's [Terms & Conditions Page](#).