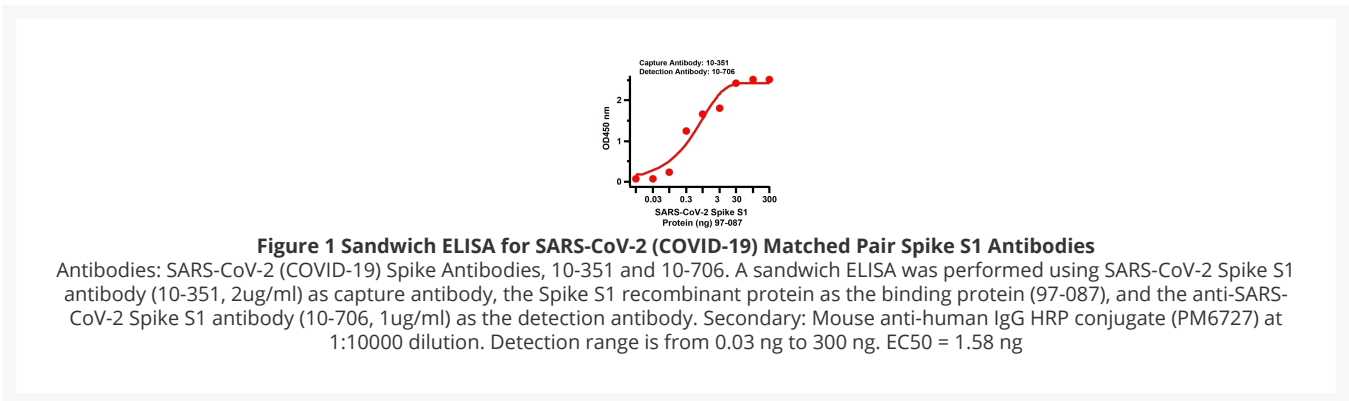
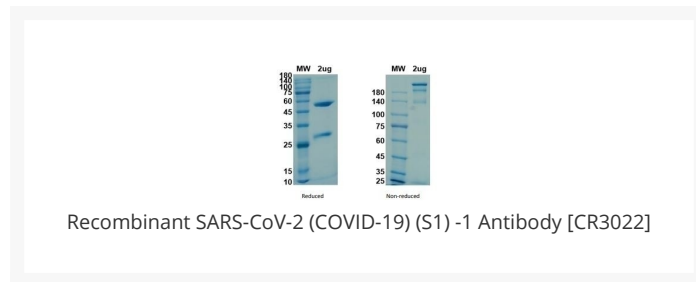




Recombinant SARS-CoV-2 (COVID-19) (S1) -1 Antibody [CR3022]

Cat. No.: 10-706



Ψ Specifications

HOST SPECIES:	Human
SPECIES REACTIVITY:	Virus
IMMUNOGEN:	Recombinant SARS-CoV-2 S1 protein
TESTED APPLICATIONS:	ELISA
APPLICATIONS:	ELISA:1:5000-1:10000
SPECIFICITY:	Recognizes SARS-CoV-2 S1 Protein

CLONALITY:	Monoclonal
ISOTYPE:	Human IgG1
CONJUGATE:	Unconjugated
PHYSICAL STATE:	Liquid
BUFFER:	PBS,pH7.5
STORAGE CONDITIONS:	Use a manual defrost freezer and avoid repeated freeze thaw cycles. Store at 2 to 8 °C for one week. Store at -20 to -80 °C for twelve months from the date of receipt.

 Additional Info

ALTERNATE NAMES:	Spike glycoprotein,Spike protein S1(S1)
USER NOTE:	Optimal dilutions for each application to be determined by the researcher.

ANTIBODIES FOR RESEARCH USE ONLY.

For additional information, visit ProSci's [Terms & Conditions Page](#).