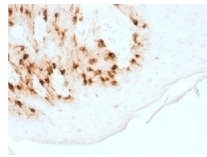


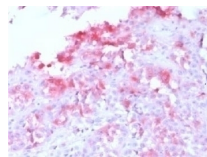


# Recombinant MART-1 / Melan-A Antibody [MLANA/1761R]

Cat. No.: 34-083



Recombinant MART-1 / Melan-A Antibody [MLANA/1761R]



IHC testing of FFPE human melanoma with recombinant Melan-A antibody (clone MLANA/1761R). HIER: steam sections in 10mM citrate buffer, pH 6.0, for 10-20 min.

## $\Psi$ Specifications

<b>HOST SPECIES:</b>	Rabbit
<b>SPECIES REACTIVITY:</b>	Human, Mouse, Rat
<b>IMMUNOGEN:</b>	Human protein was used as the immunogen for this recombinant Melan-A antibody.
<b>TESTED APPLICATIONS:</b>	Flow, IF, IHC-P, WB

<b>APPLICATIONS:</b>	<p>Western blot: 0.5-1 ug/ml</p> <p>Flow Cytometry: 0.5-1ug/10<sup>6</sup> cells</p> <p>Immunofluorescence: 0.5-1 ug/ml</p> <p>Immunohistochemistry (FFPE): 0.5-1 ug/ml for 30 minutes at RT</p> <p>Prediluted IHC only format: incubate for 30 min at RT (1)</p> <p>The optimal dilution of the recombinant Melan-A antibody for each application should be determined by the researcher.</p> <p>1. The prediluted format is supplied in a dropper bottle and is optimized for use in IHC. After epitope retrieval step (if required), drip mAb solution onto the tissue section and incubate at RT for 30 min.</p>
----------------------	--

## Ψ Properties

<b>PURIFICATION:</b>	Protein A affinity chromatography
<b>CLONALITY:</b>	Monoclonal
<b>ISOTYPE:</b>	IgG, k
<b>CONJUGATE:</b>	Unconjugated
<b>PHYSICAL STATE:</b>	Liquid
<b>BUFFER:</b>	PBS with 0.1 mg/ml BSA and 0.05% sodium azide
<b>CONCENTRATION:</b>	0.2 mg/mL
<b>STORAGE CONDITIONS:</b>	Aliquot and Store at 2-8 °C. Avoid freeze-thaw cycles.

## Ψ Additional Info

<b>OFFICIAL SYMBOL:</b>	MLANA
<b>ALTERNATE NAMES:</b>	MLANA, Antigen LB39-AA, Antigen SK29-AA, Melan-A, Protein Melan-A, MART-1, MART1
<b>GENE ID:</b>	2315
<b>USER NOTE:</b>	Optimal dilutions for each application to be determined by the researcher

## Ψ Background and References

<b>BACKGROUND:</b>	<p>MART-1/Melan-A is a protein antigen that is found on the surface of melanocytes. Antibodies against the antigen are used in the medical specialty of anatomic pathology in order to recognize cells of melanocytic differentiation, useful for the diagnosis of a melanoma. The MART-1/Melan-A antigen is specific for the melanocyte lineage, found in normal skin, the retina, and melanocytes, but not in other normal tissues. It is thus useful as a marker for melanocytic tumors (melanomas) with the caveat that it is normally found in benign nevi as well. [Wiki]</p>
--------------------	---

---

**ANTIBODIES FOR RESEARCH USE ONLY.**

For additional information, visit ProSci's [Terms & Conditions Page](#).