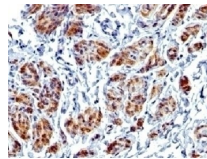


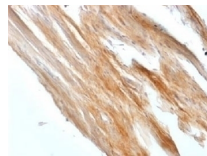


# Recombinant Caldesmon Antibody [CALD1/1424R]

Cat. No.: 34-070



Recombinant Caldesmon Antibody [CALD1/1424R]



IHC testing of FFPE rat uterus with recombinant Caldesmon antibody (clone CALD1/1424R). Required HIER: boil tissue sections in 1mM EDTA, pH 7.5-8.5, for 10-20 min.

## $\Psi$ Specifications

<b>HOST SPECIES:</b>	Rabbit
<b>SPECIES REACTIVITY:</b>	Human, Rat
<b>IMMUNOGEN:</b>	A full length human protein was used as the immunogen for the recombinant Caldesmon antibody.
<b>TESTED APPLICATIONS:</b>	Flow, IF, IHC-P

<b>APPLICATIONS:</b>	<p>Flow Cytometry: 0.5-1ug/10<sup>6</sup> cells</p> <p>Immunofluorescence: 1-2 ug/ml</p> <p>Immunohistochemistry (FFPE): 1-2 ug/ml for 30 min at RT</p> <p>Prediluted IHC only format: incubate for 30 min at RT (1)</p> <p>Titering of the recombinant Caldesmon antibody may be required for optimal performance.</p> <p>1. The prediluted format is supplied in a dropper bottle and is optimized for use in IHC. After epitope retrieval step (if required), drip mAb solution onto the tissue section and incubate at RT for 30 min.</p>
----------------------	---

## Ψ Properties

<b>PURIFICATION:</b>	Protein A affinity chromatography
<b>CLONALITY:</b>	Monoclonal
<b>ISOTYPE:</b>	IgG, k
<b>CONJUGATE:</b>	Unconjugated
<b>PHYSICAL STATE:</b>	Liquid
<b>BUFFER:</b>	PBS with 0.1 mg/ml BSA and 0.05% sodium azide
<b>CONCENTRATION:</b>	0.2 mg/mL
<b>STORAGE CONDITIONS:</b>	Aliquot and Store at 2-8 °C. Avoid freeze-thaw cycles.

## Ψ Additional Info

<b>OFFICIAL SYMBOL:</b>	CALD1
<b>ALTERNATE NAMES:</b>	Caldesmon, CDM, CALD1, CAD, CDM
<b>GENE ID:</b>	800
<b>USER NOTE:</b>	Optimal dilutions for each application to be determined by the researcher

## Ψ Background and References

<b>BACKGROUND:</b>	Caldesmon (CAD, CALD, CALD1) is an actin- and myosin-binding protein implicated in the regulation of actomyosin interactions in smooth muscle and nonmuscle cells (could act as a bridge between myosin and actin filaments). [UniProt]
--------------------	---

### ANTIBODIES FOR RESEARCH USE ONLY.

For additional information, visit ProSci's [Terms & Conditions Page](#).