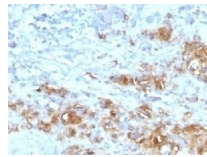


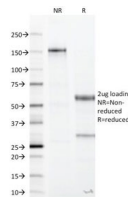


Recombinant CA19-9 Antibody [CA19.9/1390R]

Cat. No.: 34-073



Recombinant CA19-9 Antibody [CA19.9/1390R]



SDS-PAGE Analysis of Purified, BSA-Free Recombinant CA19-9 Antibody (clone CA19.9/1390R). Confirmation of Integrity and Purity of the Antibody.

Ψ Specifications

HOST SPECIES:	Rabbit
SPECIES REACTIVITY:	Human
IMMUNOGEN:	Purified human protein used as the immunogen for the recombinant CA19-9 antibody.
TESTED APPLICATIONS:	Flow, IF, IHC-P, WB

APPLICATIONS:	<p>Flow Cytometry: 2-4 ug/million cells in 0.1ml</p> <p>Immunofluorescence: 5-10 ug/ml</p> <p>Immunohistochemistry (FFPE): 5-10 ug/ml for 30 min at RT</p> <p>Prediluted IHC only format: incubate for 30 min at RT (1)</p> <p>Optimal dilution of the recombinant CA19-9 antibody should be determined by the researcher.</p> <p>1. The prediluted format is supplied in a dropper bottle and is optimized for use in IHC. After epitope retrieval step (if required), drip mAb solution onto the tissue section and incubate at RT for 30 min.</p>
----------------------	--

Ψ Properties

PURIFICATION:	Protein A affinity
CLONALITY:	Monoclonal
ISOTYPE:	IgG, k
CONJUGATE:	Unconjugated
PHYSICAL STATE:	Liquid
BUFFER:	PBS with 0.1 mg/ml BSA and 0.05% sodium azide
CONCENTRATION:	0.2 mg/mL
STORAGE CONDITIONS:	Aliquot and Store at 2-8 °C. Avoid freeze-thaw cycles.

Ψ Additional Info

USER NOTE:	Optimal dilutions for each application to be determined by the researcher
-------------------	---

Ψ Background and References

BACKGROUND:	CA19-9, a carbohydrate epitope expressed on a high MW (>400kDa) mucin glycoprotein, is a sialyl Lewis _x structure which is synthesized from type 1 blood group precursor chains and is present in individuals expressing the Lewis _x and/or Lewis _b blood group antigens.
--------------------	--

ANTIBODIES FOR RESEARCH USE ONLY.

For additional information, visit ProSci's [Terms & Conditions Page](#).