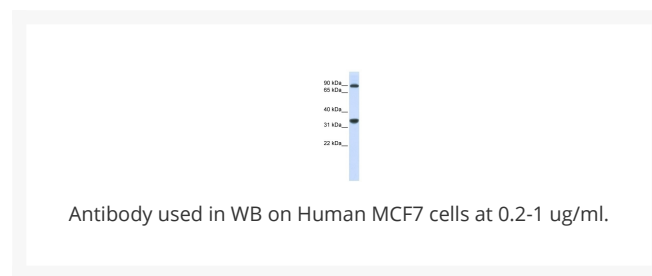
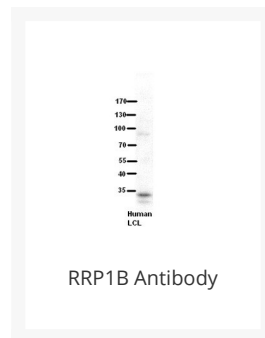




RRP1B Antibody

Cat. No.: 26-080



Ψ Specifications

HOST SPECIES:	Rabbit
SPECIES REACTIVITY:	Human
IMMUNOGEN:	Antibody produced in rabbits immunized with a synthetic peptide corresponding a region of human RRP1B.
TESTED APPLICATIONS:	ELISA, WB
APPLICATIONS:	RRP1B antibody can be used for detection of RRP1B by ELISA at 1:312500. RRP1B antibody can be used for detection of RRP1B by western blot at 1 µg/mL, and HRP conjugated secondary antibody should be diluted 1:50,000 - 100,000.
POSITIVE CONTROL:	1) Cat. No. 1219 - MCF7 Cell Lysate
PREDICTED MOLECULAR WEIGHT:	84 kDa

PURIFICATION:	Antibody is purified by peptide affinity chromatography method.
CLONALITY:	Polyclonal
CONJUGATE:	Unconjugated
PHYSICAL STATE:	Liquid
BUFFER:	Purified antibody supplied in 1x PBS buffer with 0.09% (w/v) sodium azide and 2% sucrose.
CONCENTRATION:	batch dependent
STORAGE CONDITIONS:	For short periods of storage (days) store at 4 °C. For longer periods of storage, store RRP1B antibody at -20 °C. As with any antibody avoid repeat freeze-thaw cycles.

Ψ Additional Info

OFFICIAL SYMBOL:	RRP1B
ALTERNATE NAMES:	RRP1B, KIAA0179, Nnp1, RRP1, NNP1L
ACCESSION NO.:	NP_055871
PROTEIN GI NO.:	57863269
GENE ID:	23076
USER NOTE:	Optimal dilutions for each application to be determined by the researcher.

Ψ Background and References

BACKGROUND:	RRP1B belongs to the RRP1 family. It may be a novel susceptibility gene for breast cancer progression and metastasis.
REFERENCES:	1) Crawford, N.P., PLoS Genet. 3 (11), E214 (2007).

ANTIBODIES FOR RESEARCH USE ONLY.

For additional information, visit ProSci's [Terms & Conditions Page](#).