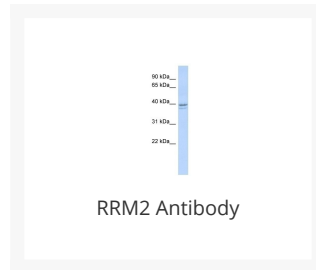




RRM2 Antibody

Cat. No.: 26-094



Ψ Specifications

HOST SPECIES:	Rabbit
SPECIES REACTIVITY:	Human
IMMUNOGEN:	Antibody produced in rabbits immunized with a synthetic peptide corresponding a region of human RRM2.
TESTED APPLICATIONS:	ELISA, WB
APPLICATIONS:	RRM2 antibody can be used for detection of RRM2 by ELISA at 1:1562500. RRM2 antibody can be used for detection of RRM2 by western blot at 1 µg/mL, and HRP conjugated secondary antibody should be diluted 1:50,000 - 100,000.
POSITIVE CONTROL:	1) Cat. No. XBL-10413 - Fetal Skeletal Muscle Tissue Lysate
PREDICTED MOLECULAR WEIGHT:	45 kDa

Ψ Properties

PURIFICATION:	Antibody is purified by peptide affinity chromatography method.
CLONALITY:	Polyclonal
CONJUGATE:	Unconjugated
PHYSICAL STATE:	Liquid

BUFFER:	Purified antibody supplied in 1x PBS buffer with 0.09% (w/v) sodium azide and 2% sucrose.
CONCENTRATION:	batch dependent
STORAGE CONDITIONS:	For short periods of storage (days) store at 4 °C. For longer periods of storage, store RRM2 antibody at -20 °C. As with any antibody avoid repeat freeze-thaw cycles.

Additional Info

OFFICIAL SYMBOL:	RRM2
ALTERNATE NAMES:	RRM2, R2, RR2M, RR2
ACCESSION NO.:	NP_001025
PROTEIN GI NO.:	4557845
GENE ID:	6241
USER NOTE:	Optimal dilutions for each application to be determined by the researcher.

Background and References

BACKGROUND:	RRM2 provides the precursors necessary for DNA synthesis. RRM2 catalyzes the biosynthesis of deoxyribonucleotides from the corresponding ribonucleotides. RRM2 inhibits Wnt signaling. Ribonucleotide reductase catalyzes the formation of deoxyribonucleotides from ribonucleotides. It is composed of 2 non-identical subunits, proteins M1 and M2. Synthesis of M2 is regulated in a cell-cycle dependent fashion. Publication Note: This RefSeq record includes a subset of the publications that are available for this gene. Please see the Entrez Gene record to access additional publications.
REFERENCES:	1) Souglakos, J., (2008) Br. J. Cancer 98 (10), 1710-1715.

ANTIBODIES FOR RESEARCH USE ONLY.

For additional information, visit ProSci's [Terms & Conditions Page](#).